



BAINBRIDGE- GUILFORD

Budget Newsletter

www.bgcsd.org

2013-2014 Proposed Budget

PUBLIC BUDGET HEARING

Tuesday, May 14, 2013

7:00 p.m.

High School Auditorium

PUBLIC BUDGET VOTE

Tuesday, May 21, 2013

Noon - 9:00 p.m.

**Bainbridge Town Hall
Guilford Town Hall**



Bainbridge-Guilford Central School District
18 Juliand Street—Bainbridge, NY 13733

As we have struggled to find ways to balance a difficult budget with increasing mandates and continually inflated fixed costs, I have been inspired by both the passion and advocacy of our students, our staff and our community on behalf of Bainbridge-Guilford Central Schools. While it is not easy and is often very difficult, the opportunity to teach our young people about the importance of standing up for what they believe and to become informed and to get involved in decisions that matter to them is not being lost by our staff or our parents. It is important for our larger community and our government representatives to understand that small schools can provide an effective and appropriate education, and B-G is a leading example of what is right in public education.

In all of the talk of tax levy caps, gap elimination adjustments, and equity in funding, it is important to acknowledge the human element of our circumstance. We have been forced to eliminate programs and services that will include the loss of several individuals whose contributions to the lives of our young people cannot be measured or quantified. In making the difficult choices pertaining to the proposed budget, we attempted to utilize a balanced approach consisting of the reduction in programs & services, the use of district reserves, and a tax increase that is under the calculated tax levy limit for our school. In considering all of these options, we are grateful for the valuable input provided by our community budget advisory committee; our faculty, students, and staff; and those who attended our public budget forums.

Challenging times provide an excellent opportunity to reflect on goals and aspirations, both long and short term. As a small rural upstate New York school with a history of and tradition of academic success and the development of well rounded and productive citizens, we have a unique opportunity to provide our community with learners who can read critically, write effectively, and understand math conceptually. We will continue to provide excellent opportunities for active and worthwhile participation in several sports, academic activities, and social opportunities. The Bainbridge-Guilford community has been very supportive of our schools, our programs, our faculty and staff, and our students. For that we thank you.

The Board of Education and I welcome each of you to learn more about the school budget process and to become an active voice in defining what the Bainbridge-Guilford Central School District will become. You can learn more and become involved by:

- Reading the information contained within this Budget Newsletter.
- Attending the public hearing, Tuesday, May 14, 2013 at 7:00 PM in the HS Auditorium.
- Attending Board of Education Meetings or speaking with your Board representatives.
- Calling Ken Wilcox (967-6335) or me (967-6321) with questions, comments, concerns, and/or suggestions.
- Sending an email inquiry to kwilcox@bgcsd.org to which we will reply.

The 2013-14 proposed school budget is the Board's plan for meeting the state and federal educational requirements and for providing your children and the community with an educational experience and learning environment in which we can all be proud. Please remember to vote on Tuesday, May 21, 2013 between Noon and 9:00 PM. Information on absentee ballots is also available in this brochure.

Dr. Donald W. Wheeler

Superintendent of Schools

BUDGET OVERVIEW


In developing the proposed budget, we faced many significant challenges: Another year of severe reductions to our Foundation Aid through the "Gap Elimination Adjustment" also known as the "GEA". The GEA alone resulted in reductions to our state formula aid of over \$1 million. Additionally, double digit increases in state pension and health care costs compounded our budget challenges. The budget proposal being presented to you includes a number of position and service reductions which are detailed in this publication.

The overall budget reflects an increase of 1.4% in estimated total expenditures next year.

HOW WILL THE BUDGET AFFECT MY TAXES?

The Board of Education adopted a proposed budget that will increase our overall estimated costs by a modest 1.4% for the next school year. However, due to limited state aid, the resulting tax levy increase for next year will be 2.9%. This amount is below the Tax Levy Limit (Tax Cap) calculated for our school district.

Actual tax rates are affected by many factors beyond the school district's control such as Assessed Values, State Equalization Rates, and STAR Exemptions. Actual tax rates will not be set until sometime in August when the state finalizes equalization rates for each of our district's ten townships. However, the following table should give you a general idea of the impact on your property. The following chart simply displays the amount of a 2.9% increase on varying levels of hypothetical assessed values at Full Market Value.

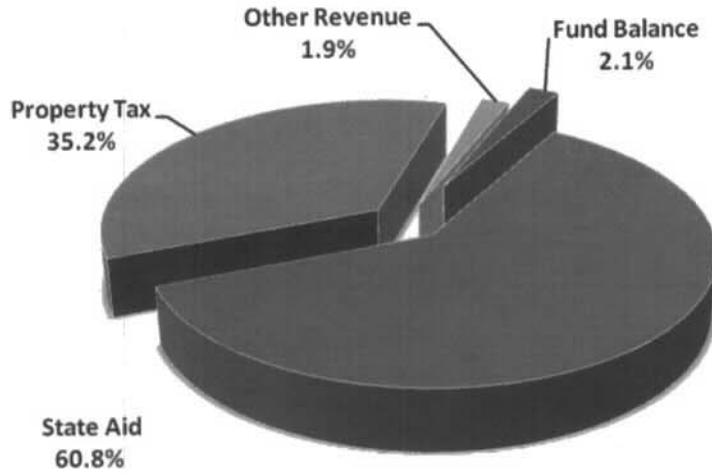
Home Value (Assessed Value) *	Total Tax Bill		Change **	
	Current	Proposed	Annual	Monthly
 50,000	901.00	927.13	26.13	2.18
75,000	1,351.50	1,390.69	39.19	3.27
100,000	1,802.00	1,854.26	52.26	4.35
150,000	2,703.00	2,781.39	78.39	6.53

* Assessed values are shown at 100% of Full Market Value (The towns of Bainbridge and Guilford assessed at Full Value—some district townships assess at less than full value).

** A monthly amount for the tax change is provided as a convenience since most home mortgages are set up with a monthly tax escrow feature.

You can access your B-G tax history online at www.infotaxonline.com

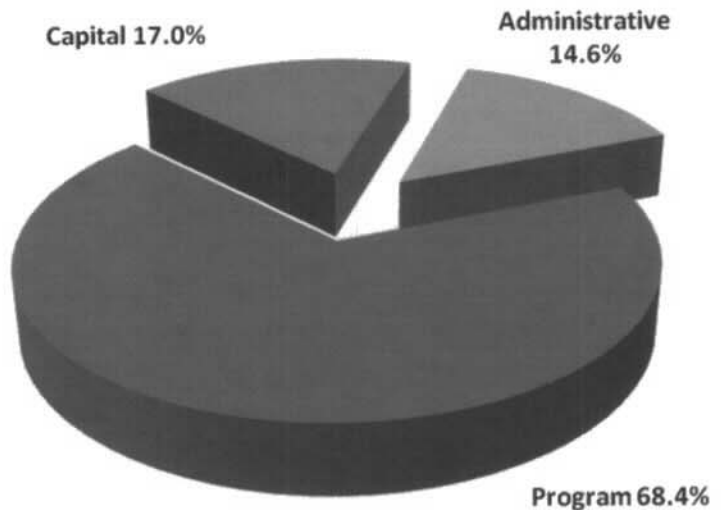
WHERE DOES THE MONEY COME FROM?



Estimated Revenue	
Category	\$
NY State Aid	10,142,966
Property Tax	5,867,084
Other Revenue	309,026
Fund Balance	350,000
Total	16,669,076

WHERE DOES THE MONEY GO?

Appropriations	
Category	\$
Program	11,399,665
Capital	2,831,701
Administrative	2,437,710
Total	16,669,076






Program: Includes costs associated with regular & special education, guidance, health, athletics, co-curricular activities, and transportation services.

Capital: Includes costs associated with district operations & maintenance activities, custodial and grounds-keeping services, and capital debt.

Administrative: Includes costs associated with the Board of Education, central administration, finance, legal, personnel, and BOCES administrative items.

OVERVIEW OF MAJOR BUDGET CHANGES

The following is a summary of the major program and service changes to the proposed budget. These changes were necessary in order to balance our estimated spending plan with the limited resources available to the school district next year:

<p>Elementary</p> 	<p>One elementary teaching position will be eliminated at the fourth grade level. An existing Teaching Assistant will be re-assigned for modified grouping between the two remaining fourth grade sections. Additionally, one elementary AIS position will not be filled after a retirement at the end of the current year. Again, the use of Teaching Assistants will be re-organized to provide remediation services.</p>
<p>High School</p> 	<p>One position will be eliminated in each of the following areas: Science, Business, Technology, French, Art and AIS. It is important to note that a new Business Manufacturing Technology program is being developed. This new program will involve a shared instructor through BOCES.</p>
<p>Facilities</p>	<p>The elimination of 1 building maintenance position and 1 custodial position.</p>
<p>BOCES</p>	<p>The elimination of a shared BOCES Chief Information Officer position.</p>
<p>Athletics</p> 	<p>Elimination of JV teams for Baseball, Softball, Girls Volleyball, and Wrestling with the intent of maintaining Varsity and Modified A teams for students. Additionally, the elimination of Indoor Track, Tennis, and Boys Volleyball – exploring the opportunities for club sports and/or intramural programs in these areas.</p>

The above list is a consolidation of major changes to the proposed budget. Additional information on program changes and remaining offerings is available from the district upon request.

WHAT ITEMS WILL APPEAR ON THE BALLOT?

- The Proposed School Budget**
- A Proposition to Finance School Buses**
- The Election of two School Board Members**

Proposed School Budget

Residents will have the opportunity to vote on the proposed school budget as outlined in this document. An opportunity to learn more about the proposed budget will be provided at our Public Budget Hearing which will be held at the High School Auditorium on Tuesday, May 14, 2013 starting at 7:00 PM. In addition to the Public Hearing, please do not hesitate to contact Superintendent Dr. Donald Wheeler at 967-6321 or School Business Official Kenneth Wilcox at 967-6335 if you have budget questions.

Proposition to Finance School Bus Purchases

Voters will be presented with a proposition to borrow an amount not to exceed \$230,000 for the replacement of two school buses. The district intends to purchase two more propane powered buses. In addition to the environmental advantages of the propane powered buses, we have found that the propane vehicles are saving approximately \$4,000 each per year in lower operating costs. The district will finance the buses over a period of five years with a Bond Anticipation Note. The principal and interest payments are eligible for Transportation Aid from New York State which could be as high as 90% of the cost. The replacement of these vehicles will help the school district to maintain a cost effective and safe fleet for the children that we transport throughout our 100 square mile school district.

Election of School Board Members

Residents will have the opportunity to vote for candidates seeking to fill two Board of Education terms. The terms of office will be for three years. The seats are currently held by members Michelle Gifford and Nancy Hinkley respectively. The elections are held at-large. The two successful candidates will commence their terms of office on July 1, 2013.

MEET THE BOARD OF EDUCATION CANDIDATES

The following individuals have submitted petitions for seats on the Board of Education. The new terms will take effect on July 1, 2013. There are two terms that will expire on June 30, 2013. Board Members are elected "at large". The candidates who have submitted petitions are listed below in alphabetical order:

Emily Hall

Julee Hartwell

You will have an opportunity to hear from our Board of Education candidates during the Public Hearing scheduled for Tuesday, May 14, 2013. The hearing will be held in the Auditorium of the High School starting at 7:00 PM. Please plan to join us for this important activity.



*B-G Students
participate in a
spelling bee
competition at
the High
School*

*Guilford Elementary
students learn about
fire safety*





Qualifications of Voters

1. 18 years of age.
2. Citizen of the United States.
3. Resident of the school district for the 30 days preceding the election.
4. Registered to vote with the school district or County Board of Elections.

Absentee Ballots

A voter who is registered and who may be unavoidably ABSENT FROM THE COUNTY of residence or unable to appear in person due to sickness, disability, attendance at college, or detention in jail or prison may obtain an application for an absentee ballot.

For more information about absentee ballots, please contact the District Clerk by calling 607-967-6321.

Bainbridge-Guilford Central School
18 Juliard St.
Bainbridge, NY 13733

Non-Profit
Organization
U.S. POSTAGE
PAID
Bainbridge, NY
13733

Postal Customer
or Current Resident
ECRWSS

Property Tax Report Card
080201 - BAINBRIDGE-GUILFORD

2012-2013 - Page 1
Official - as of 04/26/2013 03:08 PM

Important Note: Chapter 97 of the Laws of 2011 requires school districts to report data elements necessary to calculate a Property Tax Levy Limit. Data elements for the Property Tax Report Card have been renamed and redefined in accordance with these changes. Please see <http://www.p12.nysed.gov/mgtsev/propertytax/taxcap/> for additional guidance.

Form Due - April 27, 2013

School District Contact Person:
School District Telephone Number:

	Budgeted 2012-13 (A)	Proposed Budget 2013-14 (B)	Percent Change (C)
Total Proposed Spending	<input type="text" value="16,434,018"/>	<input type="text" value="16,669,076"/>	<input type="text" value="1.43"/> %
Total Proposed School Year Tax Levy, Including Tax Levy to Support Library Debt ¹	<input type="text" value="5,701,734"/>	<input type="text" value="5,867,084"/>	<input type="text" value="2.90"/> %
Permissible Exclusions to the School Tax Levy Limit	<input type="text" value="9,219"/>	<input type="text" value="117,187"/>	
Proposed School Year Tax Levy, Not Including Levy for Permissible Exclusions or Levy to Support Library Debt	<input type="text" value="5,692,515"/>	<input type="text" value="5,749,897"/>	
School Tax Levy Limit ²	<input type="text" value="5,733,788"/>	<input type="text" value="5,863,149"/>	
Difference (positive value requires 60.0% voter approval)	<input type="text" value="-41,273"/>	<input type="text" value="-113,252"/>	
Public School Enrollment	<input type="text" value="863"/>	<input type="text" value="863"/>	<input type="text" value="0.00"/> %
Consumer Price Index			<input type="text" value="2.1"/> %

¹ All proposed levies should exclude any prior year reserve for excess tax levy, including interest.

² For 2013-14, includes any carryover from 2012-13 and excludes any tax levy for library debt or prior year reserve for excess tax levy, including interest.

	Actual 2012-13 (D)	Estimated 2013-14 (E)
Adjusted Restricted Fund Balance	<input type="text" value="1,554,583"/>	<input type="text" value="1,450,000"/>
Assigned Appropriated Fund Balance	<input type="text" value="550,000"/>	<input type="text" value="350,000"/>
Adjusted Unrestricted Fund Balance	<input type="text" value="655,953"/>	<input type="text" value="650,000"/>
Adjusted Unrestricted Fund Balance as a Percent of the Total Budget	<input type="text" value="3.99"/> %	<input type="text" value="3.90"/> %



The New York State School Report Card

**Accountability
and Overview Report
2010 - 11**

School **BAINBRIDGE-GUILFORD HIGH
SCHOOL**
District **BAINBRIDGE-GUILFORD CENTRAL
SCHOOL DISTRICT**
School ID **08-02-01-04-0001**
Principal **WILLIAM ZAKRAJSEK**
Telephone **(607) 967-6323**
Grades **6-12**

This School's Report Card

The New York State School Report Card is an important part of the Board of Regents' effort to raise learning standards for all students. It provides information to the public on the school's status under the State and federal accountability systems, on student performance, and on other measures of school and district performance. Knowledge gained from the school report card on a school's strengths and weaknesses can be used to improve instruction and services to students.

State assessments are designed to help ensure that all students reach high learning standards. They show whether students are getting the knowledge and skills they need to succeed at the elementary, middle, and commencement levels and beyond. The State requires that students who are not making appropriate progress toward the standards receive academic intervention services.

Use this report to:

1 Get School Profile information.

This section shows comprehensive data relevant to this school's learning environment.

2 Review School Accountability Status.

This section indicates whether a school made adequate yearly progress (AYP) and identifies the school's accountability status.

3 Review an Overview of School Performance.

This section has information about the school's performance on state assessments in English, mathematics, and science.

For more information:

Office of Information and Reporting Services
New York State Education Department
Room 863 EBA
Albany, NY 12234
Email: dataquest@mail.nysed.gov

1 School Profile

School **BAINBRIDGE-GUILFORD HIGH SCHOOL**
 School ID **08-02-01-04-0001**

District **BAINBRIDGE-GUILFORD CENTRAL SCHOOL DISTRICT**

School Profile

This section shows comprehensive data relevant to this school's learning environment, including information about enrollment, average class size, and teacher qualifications.

Enrollment

	2008-09	2009-10	2010-11
Pre-K	0	0	0
Kindergarten	0	0	0
Grade 1	0	0	0
Grade 2	0	0	0
Grade 3	0	0	0
Grade 4	0	0	0
Grade 5	0	0	0
Grade 6	68	73	69
Ungraded Elementary	0	0	0
Grade 7	64	71	69
Grade 8	62	61	74
Grade 9	66	61	62
Grade 10	85	64	56
Grade 11	67	82	64
Grade 12	84	72	83
Ungraded Secondary	3	0	0
Total K-12	499	484	477

Enrollment Information

Enrollment counts are as of Basic Educational Data System (BEDS) day, which is typically the first Wednesday of October of the school year. Students who attend BOCES programs on a part-time basis are included in a school's enrollment. Students who attend BOCES on a full-time basis or who are placed full time by the district in an out-of-district placement are not included in a school's enrollment. Students classified by schools as "pre-first" are included in first grade counts.

Average Class Size

	2008-09	2009-10	2010-11
Common Branch			
Grade 8			
English	15	15	18
Mathematics	15	15	18
Science	16	16	18
Social Studies	15	15	
Grade 10			
English	14	14	6
Mathematics	8	8	
Science	20	20	19
Social Studies	16	16	18

Average Class Size Information

Average Class Size is the total registration in specified classes divided by the number of those classes with registration. Common Branch refers to self-contained classes in Grades 1-6.

School **BAINBRIDGE-GUILFORD HIGH SCHOOL**
School ID **08-02-01-04-0001**

District **BAINBRIDGE-GUILFORD CENTRAL SCHOOL DISTRICT**

Demographic Factors

	2008-09		2009-10		2010-11	
	#	%	#	%	#	%
Eligible for Free Lunch	103	21%	114	24%	126	26%
Reduced-Price Lunch	53	11%	63	13%	91	19%
Student Stability*		96%		94%		92%
Limited English Proficient	0	0%	0	0%	1	0%
Racial/Ethnic Origin						
American Indian or Alaska Native	0	0%	0	0%	0	0%
Black or African American	3	1%	2	0%	4	1%
Hispanic or Latino	12	2%	7	1%	11	2%
Asian or Native Hawaiian/Other Pacific Islander	8	2%	6	1%	6	1%
White	476	95%	469	97%	456	96%
Multiracial	0	0%	0	0%	0	0%

* Available only at the school level.

Attendance and Suspensions

	2007-08		2008-09		2009-10	
	#	%	#	%	#	%
Annual Attendance Rate		93%		96%		94%
Student Suspensions	43	8%	29	6%	36	7%

Demographic Factors Information

Eligible for Free Lunch and Reduced-Price Lunch percentages are determined by dividing the number of approved lunch applicants by the Basic Educational Data System (BEDS) enrollment in full-day Kindergarten through Grade 12. *Eligible for Free Lunch and Limited English Proficient* counts are used to determine *Similar Schools* groupings within a *Need/Resource Capacity* category. *Student Stability* is the percentage of students in the highest grade in a school who were also enrolled in that school at any time during the previous school year. (For example, if School A, which serves Grades 6-8, has 100 students enrolled in Grade 8 this year, and 92 of those 100 students were also enrolled in School A last year, the stability rate for the school is 92 percent.)

Attendance and Suspensions Information

Annual Attendance Rate is determined by dividing the school's total actual attendance by the total possible attendance for a school year. A school's actual attendance is the sum of the number of students in attendance on each day the school was open during the school year. Possible attendance is the sum of the number of enrolled students who should have been in attendance on each day the school was open during the school year. *Student Suspension* rate is determined by dividing the number of students who were suspended from school (not including in-school suspensions) for one full day or longer anytime during the school year by the Basic Educational Data System (BEDS) day enrollments for that school year. A student is counted only once, regardless of whether the student was suspended one or more times during the school year.

School **BAINBRIDGE-GUILFORD HIGH SCHOOL**
 School ID **08-02-01-04-0001**

Teacher Qualifications

	2008-09	2009-10	2010-11
Total Number of Teachers	51	51	49
Percent with No Valid Teaching Certificate	0%	0%	0%
Percent Teaching Out of Certification	4%	6%	2%
Percent with Fewer Than Three Years of Experience	10%	16%	4%
Percentage with Master's Degree Plus 30 Hours or Doctorate	18%	18%	24%
Total Number of Core Classes	149	136	136
Percent Not Taught by Highly Qualified Teachers in This School	1%	3%	0%
Percent Not Taught by Highly Qualified Teachers in This District	1%	2%	0%
Percent Not Taught by Highly Qualified in High-Poverty Schools Statewide	8%	6%	5%
Percent Not Taught by Highly Qualified in Low-Poverty Schools Statewide	1%	1%	0%
Total Number of Classes	233	224	224
Percent Taught by Teachers Without Appropriate Certification	3%	8%	2%

Teacher Turnover Rate

	2007-08	2008-09	2009-10
Turnover Rate of Teachers with Fewer than Five Years of Experience	43%	0%	27%
Turnover Rate of All Teachers	16%	6%	14%

Staff Counts

	2008-09	2009-10	2010-11
Total Other Professional Staff	3	3	3
Total Paraprofessionals*	N/A	N/A	N/A
Assistant Principals	0	0	0
Principals	2	2	2

* Not available at the school level.

District **BAINBRIDGE-GUILFORD CENTRAL SCHOOL DISTRICT**

Teacher Qualifications Information

The *Percent Teaching Out of Certification* is the percent doing so more than on an incidental basis; that is, the percent teaching for more than five periods per week outside certification.

Core Classes are primarily K-6 common branch, English, mathematics, science, social studies, art, music, and foreign languages. To be *Highly Qualified*, a teacher must have at least a Bachelor's degree, be certified to teach in the subject area, and show subject matter competency. A teacher who taught one class outside of the certification area(s) is counted as Highly Qualified provided that 1) the teacher had been determined by the school or district through the HOUSSSE process or other state-accepted methods to have demonstrated acceptable subject knowledge and teaching skills and 2) the class in question was not the sole assignment reported. Credit for incidental teaching does not extend beyond a single assignment. Independent of Highly Qualified Teacher status, any assignment for which a teacher did not hold a valid certificate still registers as teaching out of certification. High-poverty and low-poverty schools are those schools in the upper and lower quartiles, respectively, for percentage of students eligible for a free or reduced-price lunch.

Teacher Turnover Rate Information

Teacher Turnover Rate for a specified school year is the number of teachers in that school year who were not teaching in the following school year divided by the number of teachers in the specified school year, expressed as a percentage.

Staff Counts Information

Other Professionals includes administrators, guidance counselors, school nurses, psychologists, and other professionals who devote more than half of their time to non-teaching duties. Teachers who are shared between buildings within a district are reported on the district report only.

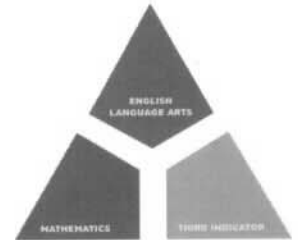
School **BAINBRIDGE-GUILFORD HIGH SCHOOL**
School ID **08-02-01-04-0001**

District **BAINBRIDGE-GUILFORD CENTRAL SCHOOL DISTRICT**

Understanding How Accountability Works in New York State

The federal No Child Left Behind (NCLB) Act requires that states develop and report on measures of student proficiency in 1) English language arts (ELA), in 2) mathematics, and on 3) a third indicator. In New York State in 2010–11, the third indicator is science at the elementary/middle level and graduation rate at the secondary level. Schools or districts that meet predefined goals on these measures are making Adequate Yearly Progress (AYP).

For more information about accountability in New York State, visit: <http://www.p12.nysed.gov/irs/accountability/>.



1 English Language Arts (ELA)

To make AYP in ELA, every accountability group must make AYP. For a group to make AYP, it must meet the participation and the performance criteria.

A Participation Criterion

At the elementary/middle level, 95 percent of Grades 3–8 students enrolled during the test administration period in each group with 40 or more students must be tested on the New York State Testing Program (NYSTP) in ELA or, if appropriate, the New York State English as a Second Language Achievement Test (NYSESLAT), or the New York State Alternate Assessment (NYSAA) in ELA. At the secondary level, 95 percent of seniors in 2010–11 in each accountability group with 40 or more students must have taken an English examination that meets the students' graduation requirement.

B Performance Criterion

At the elementary/middle level, the Performance Index (PI) of each group with 30 or more continuously enrolled tested students must equal or exceed its Effective Annual Measurable Objective (AMO) or the group must make Safe Harbor. (NYSESLAT is used only for participation.) At the secondary level, the PI of each group in the 2007 cohort with 30 or more members must equal or exceed its Effective AMO or the group must make Safe Harbor. To make Safe Harbor, the PI of the group must equal or exceed its Safe Harbor Target and the group must qualify for Safe Harbor using the third indicator, science or graduation rate.

2 Mathematics

The same criteria for making AYP in ELA apply to mathematics. At the elementary/middle level, the measures used to determine AYP are the NYSTP and the NYSAA in mathematics. At the secondary level, the measures are mathematics examinations that meet the students' graduation requirement.

3 Third Indicator

In addition to English language arts and mathematics, the school must also make AYP in a third area of achievement. This means meeting the criteria in science at the elementary/middle level and the criteria in graduation rate at the secondary level.

Elementary/Middle-Level Science: To make AYP, the All Students group must meet the participation criterion *and* the performance criterion.

A Participation Criterion

Eighty percent of students in Grades 4 and/or 8 enrolled during the test administration period in the All Students group, if it has 40 or more students, must be tested on an accountability measure. In Grade 4, the measures are the Grade 4 elementary-level science test and the Grade 4 NYSAA in science. In Grade 8 science, the measures are the Grade 8 middle-level science test, Regents science examinations, and the Grade 8 NYSAA in science.

B Performance Criterion

The PI of the All Students group, if it has 30 or more students, must equal or exceed the State Science Standard (100) or the Science Progress Target.

Qualifying for Safe Harbor in Elementary/Middle-Level ELA and Math: To qualify, the group must meet both the participation criterion and the performance criterion in science.

Secondary-Level Graduation Rate: For a school to make AYP in graduation rate, the percent of students in the 2006 graduation-rate total cohort in the All Students group earning a local or Regents diploma by August 31, 2010 must equal or exceed the Graduation-Rate Standard (80%) or the Graduation-Rate Progress Target.

Qualifying for Safe Harbor in Secondary-Level ELA and Math: To qualify, the percent of the 2006 graduation-rate total cohort earning a local or Regents diploma by August 31, 2010 must equal or exceed the Graduation-Rate Standard (80%) or the Graduation-Rate Progress Target for that group.

School **BAINBRIDGE-GUILFORD HIGH SCHOOL**
School ID **08-02-01-04-0001**

District **BAINBRIDGE-GUILFORD CENTRAL SCHOOL DISTRICT**

Useful Terms for Understanding Accountability

12th Graders

The count of 12th graders enrolled during the 2010–11 school year used to determine the Percentage Tested for the Participation part of the AYP determination for secondary-level ELA and mathematics. These are the first numbers in the parentheses after the subgroup label on the secondary-level ELA and mathematics pages.

2007 Cohort

The count of students in the 2007 accountability cohort used to determine the Performance Index for the Test Performance part of the AYP determination for secondary-level ELA and mathematics. These are the second numbers in the parentheses after the subgroup label on the secondary-level ELA and mathematics pages.

Accountability Cohort for English and Mathematics

The accountability cohort is used to determine if a school or district met the performance criterion in secondary-level ELA and mathematics. The 2007 school accountability cohort consists of all students who first entered Grade 9 anywhere in the 2007–08 school year, and all ungraded students with disabilities who reached their seventeenth birthday in the 2007–08 school year, who were enrolled on October 6, 2010 and did not transfer to a diploma granting program. Students who earned a high school equivalency diploma or were enrolled in an approved high school equivalency preparation program on June 30, 2011, are not included in the 2007 school accountability cohort. The 2007 district accountability cohort consists of all students in each school accountability cohort plus students who transferred within the district after BEDS day plus students who were placed outside the district by the Committee on Special Education or district administrators and who met the other requirements for cohort membership. Cohort is defined in Section 100.2 (p) (16) of the Commissioner's Regulations.

Adequate Yearly Progress (AYP)

Adequate Yearly Progress (AYP) indicates satisfactory progress by a district or a school toward the goal of proficiency for all students.

Annual Measurable Objective (AMO)

The Annual Measurable Objective (AMO) is the Performance Index value that signifies that an accountability group is making satisfactory progress toward the goal that 100 percent of students will be proficient in the State's learning standards for English language arts and mathematics by 2013–14. The AMOs for each grade level will be increased as specified in CR100.2(p) (14) and will reach 200 in 2013–14. (See Effective AMO for further information.)

Continuous Enrollment

The count of continuously enrolled tested students used to determine the Performance Index for the Test Performance part of the AYP determination for elementary/middle-level ELA, mathematics, and science. These are the second numbers in the parentheses after the subgroup label on the elementary/middle-level ELA, mathematics, and science pages.

Continuously Enrolled Students

At the elementary/middle level, continuously enrolled students are those enrolled in the school or district on BEDS day (usually the first Wednesday in October) of the school year until the test administration period. At the secondary level, all students who meet the criteria for inclusion in the accountability cohort are considered to be continuously enrolled.

Effective Annual Measurable Objective (Effective AMO)

The Effective Annual Measurable Objective is the Performance Index (PI) value that each accountability group within a school or district is expected to achieve to make AYP. The Effective AMO is the lowest PI that an accountability group of a given size can achieve in a subject for the group's PI not to be considered significantly different from the AMO for that subject. If an accountability group's PI equals or exceeds the Effective AMO, it is considered to have made AYP. A more complete definition of Effective AMO and a table showing the PI values that each group size must equal or exceed to make AYP are available at www.p12.nysed.gov/irs.

Graduation Rate

The Graduation Rate on the Graduation Rate page is the percentage of the 2006 cohort that earned a local or Regents diploma by August 31, 2010.

Graduation-Rate Total Cohort

The Graduation-Rate Total Cohort, shown on the Graduation Rate page, is used to determine if a school or district made AYP in graduation rate. For the 2010–11 school year, this cohort is the 2006 graduation-rate total cohort. The 2006 total cohort consists of all students who first entered Grade 9 anywhere in the 2006–07 school year, and all ungraded students with disabilities who reached their seventeenth birthday in the 2006–07 school year, and who were enrolled in the school/district for five months or longer or who were enrolled in the school/district for less than five months but were previously enrolled in the same school/district for five months or longer between the date they first entered Grade 9 and the date they last ended enrollment. A more detailed definition of graduation-rate cohort can be found in the SIRS Manual at <http://www.p12.nysed.gov/irs/sirs/>.

For districts and schools with fewer than 30 graduation-rate total cohort members in the All Students group in 2010–11, data for 2009–10 and 2010–11 for accountability groups were combined to determine counts and graduation rates. Groups with fewer than 30 students in the graduation-rate total cohort are not required to meet the graduation-rate criterion.

Limited English Proficient

For all accountability measures, if the count of LEP students is equal to or greater than 30, former LEP students are also included in the performance calculations.

Non-Accountability Groups

Female, Male, and Migrant groups are not part of the AYP determination for any measure.

School **BAINBRIDGE-GUILFORD HIGH SCHOOL**
School ID **08-02-01-04-0001**

District **BAINBRIDGE-GUILFORD CENTRAL SCHOOL DISTRICT**

Useful Terms for Understanding Accountability (continued)

Participation

Accountability groups with fewer than 40 students enrolled during the test administration period (for elementary/middle-level ELA, math, and science) or fewer than 40 12th graders (for secondary-level ELA and mathematics) are not required to meet the participation criterion. If the Percentage Tested for an accountability group fell below 95 percent for ELA and math or 80 percent for science in 2010–11, the participation enrollment ("Total" or "12th Graders") shown in the tables is the sum of 2009–10 and 2010–11 participation enrollments and the "Percentage Tested" shown is the weighted average of the participation rates over those two years.

Performance Index (PI)

A Performance Index is a value from 0 to 200 that is assigned to an accountability group, indicating how that group performed on a required State test (or approved alternative) in English language arts, mathematics, or science. Student scores on the tests are converted to four performance levels, from Level 1 to Level 4. (See performance level definitions on the Overview summary page.) At the elementary/middle level, the PI is calculated using the following equation:

$$100 \times \left[\frac{\text{Count of Continuously Enrolled Tested Students Performing at Levels 2, 3, and 4} + \text{Count at Levels 3 and 4}}{\text{Count of All Continuously Enrolled Tested Students}} \right]$$

At the secondary level, the PI is calculated using the following equation:

$$100 \times \left[\frac{\text{Count of Cohort Members Performing at Levels 2, 3, and 4} + \text{Count at Levels 3 and 4}}{\text{Count of All Cohort Members}} \right]$$

A list of tests used to measure student performance for accountability is available at www.p12.nysed.gov/irs.

Progress Targets

For accountability groups below the State Standard in science or graduation rate, the Progress Target is an alternate method for making AYP or qualifying for Safe Harbor in English language arts and mathematics based on improvement over the previous year's performance.

Science: The current year's Science Progress Target is calculated by adding one point to the previous year's Performance Index (PI). Example: The 2010–11 Science Progress Target is calculated by adding one point to the 2009–10 PI.

Graduation Rate: The Graduation-rate Progress Target is calculated by determining a 20% gap reduction between the rate of the previous year's graduation-rate cohort and the state standard. Example: The 2010–11 Graduation-Rate Progress Target = $[(80 - \text{percentage of the 2005 cohort earning a local or Regents diploma by August 31, 2009}) \times 0.20] + \text{percentage of the 2005 cohort earning a local or Regents diploma by August 31, 2009}$.

Progress Targets are provided for groups whose PI (for science) or graduation rate (for graduation rate) is below the State Standard.

Safe Harbor Targets

Safe Harbor provides an alternate means to demonstrate AYP for accountability groups that do not achieve their EAMOs in English or mathematics. The 2010–11 safe harbor targets are calculated using the following equation:
2009–10 PI + (200 – the 2009–10 PI) × 0.10

Safe Harbor Targets are provided for groups whose PI is less than the EAMO.

Safe Harbor Qualification (*)

On the science page, if the group met both the participation and the performance criteria for science, the Safe Harbor Qualification column will show "Qualified." If the group did not meet one or more criteria, the column will show "Did not qualify." A "*" symbol after the 2010–11 Safe Harbor Target on the elementary/middle- or secondary-level ELA or mathematics page indicates that the student group did not make AYP in science (elementary/middle level) or graduation rate (secondary level) and; therefore, the group did not qualify for Safe Harbor in ELA or mathematics.

State Standard

The criterion value that represents minimally satisfactory performance (for science) or a minimally satisfactory percentage of cohort members earning a local or Regents diploma (for graduation rate). In 2010–11, the State Science Standard is a Performance Index of 100; the State Graduation-Rate Standard is 80%. The Commissioner may raise the State Standard at his discretion in future years.

Students with Disabilities

For all measures, if the count of students with disabilities is equal to or greater than 30, former students with disabilities are also included in the performance calculations.

Test Performance

For districts and schools with fewer than 30 continuously enrolled tested students (for elementary/middle-level ELA, math, and science) or fewer than 30 students in the 2007 cohort (for secondary-level ELA and mathematics) in the All Students group in 2010–11, data for 2009–10 and 2010–11 for accountability groups were combined to determine counts and Performance Indices. For districts and schools with 30 or more continuously enrolled students/2007 cohort members in the All Students group in 2010–11, student groups with fewer than 30 members are not required to meet the performance criterion. This is indicated by a "—" in the Test Performance column in the table.

Total

The count of students enrolled during the test administration period used to determine the Percentage Tested for the Participation part of the AYP determination for elementary/middle-level ELA, mathematics, and science. These are the first numbers in the parentheses after the subgroup label on the elementary/middle-level ELA, mathematics, and science pages. For accountability calculations, students who were excused from testing for medical reasons in accordance with federal NCLB guidance are not included in the count.

School **BAINBRIDGE-GUILFORD HIGH SCHOOL**
School ID **08-02-01-04-0001**

District **BAINBRIDGE-GUILFORD CENTRAL SCHOOL DISTRICT**

Understanding Your School Accountability Status

New York State participates in the Differentiated Accountability pilot program, as approved by the United States Department of Education in January 2009. Under this program, each public school in the State is assigned an accountability "phase" (Good Standing, Improvement, Corrective Action, or Restructuring) and, for schools not in Good Standing, a "category" (Basic, Focused, or Comprehensive) for each measure for which the school is accountable. Accountability measures for schools at the elementary/middle level are English language arts (ELA), mathematics, and science; at the secondary level, they are ELA, mathematics, and graduation rate. Generally, the school's overall accountability status is its most advanced accountability phase and its highest category within that phase. A school in any year of the phase (that is not Good Standing) that makes AYP for the measure remains in the same phase/category the following year. An identified school that makes AYP in the identified measure for two consecutive years returns to Good Standing. Once a school is identified with a category within a phase, it cannot move to a less intensive category in the following school year within that phase.

Each school district with one or more Title I schools and each Title I charter school designated as Improvement (year 1 and year 2), Corrective Action, or Restructuring must make Supplemental Educational Services available for eligible students in the identified Title I school(s). A school district with one or more schools designated as Improvement (year 2), Corrective Action, or Restructuring must also provide Public School Choice to eligible students in identified Title I school(s). For more information on the Differentiated Accountability program and a list of interventions for schools not in Good Standing, see http://www.p12.nysed.gov/accountability/APA/Differentiated_Accountability/DA_home.html.

School **BAINBRIDGE-GUILFORD HIGH SCHOOL**
School ID **08-02-01-04-0001**

District **BAINBRIDGE-GUILFORD CENTRAL SCHOOL DISTRICT**

Understanding Your School Accountability Status (continued)

Phase	Phase/Category
Good Standing A school that has not been designated as Improvement, Corrective Action, or Restructuring.	
Improvement (year 1) A school that failed to make AYP for two consecutive years on the same accountability measure; or a school that was designated as Improvement (year 1) in the current school year that made AYP for the identified measure and is in Good Standing.	<p>Improvement/Basic: A school that failed to make AYP in ELA and/or math for one accountability group, but made AYP for the All Students group; or a school that failed to make AYP in only science or graduation rate.</p> <p>Improvement/Focused: A school that failed to make AYP in ELA and/or math for more than one accountability group, but made AYP for the All Students group; or a school whose worst status is Improvement/Basic for at least two measures.</p> <p>Improvement/Comprehensive: A school that failed to make AYP in ELA and/or math for the All Students group; or a school that failed to make AYP in ELA and/or math for every accountability group for which there are at least two, but made AYP for the All Students group; or a school that failed to make AYP in ELA and/or math AND in science or graduation rate.</p>
Improvement (year 2) A school that was designated as a school in Improvement (year 1) in the current school year and failed to make AYP on the same accountability measure for which it was identified; or a school that was designated as Improvement (year 2) in the current school year that made AYP for the identified measure.	
Corrective Action (year 1) A school that was designated as a school in Improvement (year 2) in the current school year and failed to make AYP on the same accountability measure for which it was identified; or a school that was designated as Corrective Action (year 1) in the current school year that made AYP for the identified measure.	<p>Corrective Action or Restructuring/Focused: A school that failed to make AYP in ELA and/or math for one or more accountability groups, but made AYP for the All Students group; or a school that failed to make AYP in science or graduation rate but made AYP in ELA and math.</p> <p>Corrective Action or Restructuring/Comprehensive: A school that failed to make AYP in ELA and/or math for the All Students group; or a school that failed to make AYP in ELA and/or math for every accountability group except the All Students group for which there are at least two, but made AYP for the All Students group; or a school that failed to make AYP in ELA and/or math AND in science or graduation rate.</p>
Corrective Action (year 2) A school that was designated as a school in Corrective Action (year 1) in the current school year that failed to make AYP on the same accountability measure for which it was identified; or a school that was designated as Corrective Action (year 2) in the current school year that made AYP for the identified measure.	
Restructuring (year 1) A school that was designated as a school in Corrective Action (year 2) in the current school year and failed to make AYP on the same accountability measure for which it was identified; or a school that was designated as Restructuring (year 1) in the current school year that made AYP for the identified measure.	<p>SURR: A school that is identified for registration review (SURR) during a school year in which it is designated as a school in Improvement or Corrective Action shall, in the next school year, be designated as Restructuring (year 1)/Comprehensive.</p>
Restructuring (year 2) A school that was designated as a school in Restructuring (year 1) in the current school year that failed to make AYP on the same accountability measure for which it was identified; or a school that was designated as Restructuring (year 2) in the current school year that made AYP for the identified measure.	
Restructuring (Advanced) A school that was designated as a school in Restructuring (year 2) in the current school year that failed to make AYP on the same accountability measure for which it was identified; or a school that was designated as Restructuring (Advanced) in the current school year that made AYP for the identified measure.	

School **BAINBRIDGE-GUILFORD HIGH SCHOOL**
 School ID **08-02-01-04-0001**

District **BAINBRIDGE-GUILFORD CENTRAL SCHOOL DISTRICT**

Summary

Overall Accountability Status (2011-12)

In Good Standing

Elementary/Middle Level

ELA In Good Standing

Math In Good Standing

Science In Good Standing

Secondary Level

ELA In Good Standing

Math In Good Standing

Graduation Rate In Good Standing

Title I Part A Funding

Years the School Received Title I Part A Funding

2009-10

2010-11

2011-12

NO

NO

NO

On which accountability measures did this school make Adequate Yearly Progress (AYP) and which groups made AYP on each measure?

Student Groups	Elementary/Middle Level			Secondary Level		
	English Language Arts	Mathematics	Science	English Language Arts	Mathematics	Graduation Rate
All Students	✓	✓	✓	✓	✓	✓
Ethnicity						
American Indian or Alaska Native	-	-	-	-	-	-
Black or African American	-	-	-	-	-	-
Hispanic or Latino	-	-	-	-	-	-
Asian or Native Hawaiian/Other Pacific Islander	-	-	-	-	-	-
White	✓	✓	-	✓	✓	-
Multiracial	-	-	-	-	-	-
Other Groups						
Students with Disabilities	-	-	-	-	-	-
Limited English Proficient	-	-	-	-	-	-
Economically Disadvantaged	✓	✓	-	-	-	-
Student groups making AYP in each subject	✓ 3 of 3	✓ 3 of 3	✓ 1 of 1	✓ 2 of 2	✓ 2 of 2	✓ 1 of 1

AYP Status

- ✓ Made AYP
- ✓^{SH} Made AYP Using Safe Harbor Target
- ✗ Did not make AYP
- Insufficient Number of Students to Determine AYP Status

School **BAINBRIDGE-GUILFORD HIGH SCHOOL**
 School ID **08-02-01-04-0001**

District **BAINBRIDGE-GUILFORD CENTRAL SCHOOL DISTRICT**

Elementary/Middle-Level English Language Arts

Accountability Status In Good Standing
for This Subject
(2011-12)

Accountability Measures 3 of 3 Student groups making AYP in English language arts
 ✓ Made AYP

How did students in each accountability group perform on elementary/middle-level English language arts accountability measures?

Student Group (Total: Continuous Enrollment)	AYP	Participation		Test Performance		Performance Objectives		
	Status	Met Criterion	Percentage Tested	Met Criterion	Performance Index	Effective AMO	Safe Harbor Target 2010-11	2011-12
Accountability Groups								
All Students (202:200)	✓	✓	100%	✓	147	114		
Ethnicity								
American Indian or Alaska Native (0:0)	-	-	-	-	-	-	-	-
Black or African American (2:2)	-	-	-	-	-	-	-	-
Hispanic or Latino (6:6)	-	-	-	-	-	-	-	-
Asian or Native Hawaiian/Other Pacific Islander (2:2)	-	-	-	-	-	-	-	-
White (192:190)	✓	✓	99%	✓	145	114		
Multiracial (0:0)	-	-	-	-	-	-	-	-
Other Groups								
Students with Disabilities (25:25)	-	-	-	-	-	-	-	-
Limited English Proficient (1:1)	-	-	-	-	-	-	-	-
Economically Disadvantaged (92:90)	✓	✓	99%	✓	143	112		
Final AYP Determination	✓ 3 of 3							
Non-Accountability Groups								
Female (102:100)			99%		157	112		
Male (100:100)			100%		136	112		
Migrant (0:0)								

Symbols

- ✓ Made AYP
- ✓^{SH} Made AYP Using Safe Harbor Target
- ✗ Did not make AYP
- Fewer Than 40 Total/Fewer Than 30 Continuous Enrollment
- ‡ Did not qualify for Safe Harbor

NOTE: See *Useful Terms for Understanding Accountability* for explanations and definitions of terms and table labels used on this page.

School **BAINBRIDGE-GUILFORD HIGH SCHOOL**
 School ID **08-02-01-04-0001**

District **BAINBRIDGE-GUILFORD CENTRAL SCHOOL DISTRICT**

Elementary/Middle-Level Mathematics

Accountability Status In Good Standing
for This Subject
(2011-12)

Accountability Measures 3 of 3 Student groups making AYP in mathematics
 ✓ Made AYP

How did students in each accountability group perform on elementary/middle-level mathematics accountability measures?

Student Group (Total: Continuous Enrollment)	AYP	Participation		Test Performance		Performance Objectives		
	Status	Met Criterion	Percentage Tested	Met Criterion	Performance Index	Effective AMO	Safe Harbor Target 2010-11 2011-12	
Accountability Groups								
All Students (201:199)	✓	✓	100%	✓	141	129		
Ethnicity								
American Indian or Alaska Native (0:0)	-	-	-	-	-	-		
Black or African American (2:2)	-	-	-	-	-	-		
Hispanic or Latino (6:6)	-	-	-	-	-	-		
Asian or Native Hawaiian/Other Pacific Islander (2:2)	-	-	-	-	-	-		
White (191:189)	✓	✓	99%	✓	139	129		
Multiracial (0:0)	-	-	-	-	-	-		
Other Groups								
Students with Disabilities (25:25)	-	-	-	-	-	-		
Limited English Proficient (1:1)	-	-	-	-	-	-		
Economically Disadvantaged (91:90)	✓	✓	100%	✓	130	127		
Final AYP Determination	✓ 3 of 3							
Non-Accountability Groups								
Female (101:100)			100%		139	127		
Male (100:99)			99%		143	127		
Migrant (0:0)								

Symbols

- ✓ Made AYP
- ✓^{SH} Made AYP Using Safe Harbor Target
- ✗ Did not make AYP
- Fewer Than 40 Total/Fewer Than 30 Continuous Enrollment
- ‡ Did not qualify for Safe Harbor

NOTE: See *Useful Terms for Understanding Accountability* for explanations and definitions of terms and table labels used on this page.

School **BAINBRIDGE-GUILFORD HIGH SCHOOL**
 School ID **08-02-01-04-0001**

District **BAINBRIDGE-GUILFORD CENTRAL SCHOOL DISTRICT**

Elementary/Middle-Level Science

Accountability Status In Good Standing
for This Subject
(2011-12)

Accountability Measures 1 of 1 Student groups making AYP in science
 ✓ Made AYP

How did students in each accountability group perform on elementary/middle-level science accountability measures?

Student Group (Total: Continuous Enrollment)	AYP		Participation		Test Performance		Performance Objectives	
	Status	Safe Harbor Qualification	Met Criterion	Percentage Tested	Met Criterion	Performance Index	State Standard	Progress Target 2010-11 2011-12
Accountability Groups								
All Students (67:66)	✓	Qualified	✓	100%	✓	186	100	
Ethnicity								
American Indian or Alaska Native (0:0)								
Black or African American (0:0)								
Hispanic or Latino (2:2)								
Asian or Native Hawaiian/Other Pacific Islander (1:1)								
White (64:63)		Qualified	✓	100%	✓	186	100	
Multiracial (0:0)								
Other Groups								
Students with Disabilities (7:7)								
Limited English Proficient (0:0)								
Economically Disadvantaged (29:29)								
Final AYP Determination	✓ 1 of 1							
Non-Accountability Groups								
Female (37:37)						186	100	
Male (30:29)								
Migrant (0:0)								

Symbols

- ✓ Made AYP
- ✗ Did not make AYP
- Fewer Than 40 Total/Fewer Than 30 Continuous Enrollment

NOTE: See *Useful Terms for Understanding Accountability* for explanations and definitions of terms and table labels used on this page.

School **BAINBRIDGE-GUILFORD HIGH SCHOOL**
School ID **08-02-01-04-0001**

District **BAINBRIDGE-GUILFORD CENTRAL SCHOOL DISTRICT**

Secondary-Level English Language Arts

Accountability Status In Good Standing
for This Subject
(2011-12)

Accountability Measures 2 of 2 Student groups making AYP in English language arts
✓ Made AYP

How did students in each accountability group perform on secondary-level English language arts accountability measures?

Student Group (12th Graders: 2007 Cohort)	AYP Status	Participation		Test Performance		Performance Objectives		
		Met Criterion	Percentage Tested	Met Criterion	Performance Index	Effective AMO	Safe Harbor Target 2010-11 2011-12	
Accountability Groups								
All Students (75:73)	✓	✓	99%	✓	190	172		
Ethnicity								
American Indian or Alaska Native (0:0)								
Black or African American (0:0)								
Hispanic or Latino (0:0)								
Asian or Native Hawaiian/Other Pacific Islander (0:0)								
White (75:73)	✓	✓	99%	✓	190	172		
Multiracial (0:0)								
Other Groups								
Students with Disabilities (9:9)	-	-	-	-	-	-		
Limited English Proficient (0:0)								
Economically Disadvantaged (23:22)	-	-	-	-	-	-		
Final AYP Determination	✓ 2 of 2							
Non-Accountability Groups								
Female (41:37)			98%		197	167		
Male (34:36)			-		183	167		
Migrant (0:0)								

Symbols

- ✓ Made AYP
- ✓^{SH} Made AYP Using Safe Harbor Target
- X Did not make AYP
- Fewer Than 40 12th Graders/
Fewer Than 30 Cohort
- ‡ Did not qualify for Safe Harbor

NOTE: See *Useful Terms for Understanding Accountability* for explanations and definitions of terms and table labels used on this page.

School **BAINBRIDGE-GUILFORD HIGH SCHOOL**
School ID **08-02-01-04-0001**

District **BAINBRIDGE-GUILFORD CENTRAL SCHOOL DISTRICT**

Secondary-Level Mathematics

Accountability Status In Good Standing
for This Subject
(2011-12)

Accountability Measures 2 of 2 Student groups making AYP in mathematics
✓ Made AYP

How did students in each accountability group perform on secondary-level mathematics accountability measures?

Student Group	AYP Status	Participation		Test Performance		Performance Objectives		
		Met Criterion	Percentage Tested	Met Criterion	Performance Index	Effective AMO	Safe Harbor Target 2010-11 2011-12	
(12th Graders: 2007 Cohort)								
Accountability Groups								
All Students (75:73)	✓	✓	99%	✓	199	169		
Ethnicity								
American Indian or Alaska Native (0:0)								
Black or African American (0:0)								
Hispanic or Latino (0:0)								
Asian or Native Hawaiian/Other Pacific Islander (0:0)								
White (75:73)	✓	✓	99%	✓	199	169		
Multiracial (0:0)								
Other Groups								
Students with Disabilities (9:9)	-	-	-	-	-	-		
Limited English Proficient (0:0)								
Economically Disadvantaged (23:22)	-	-	-	-	-	-		
Final AYP Determination	✓ 2 of 2							
Non-Accountability Groups								
Female (41:37)			98%		200	164		
Male (34:36)			-		197	164		
Migrant (0:0)								

Symbols

- ✓ Made AYP
- ✓^{SH} Made AYP Using Safe Harbor Target
- ✗ Did not make AYP
- Fewer Than 40 12th Graders/
Fewer Than 30 Cohort
- ‡ Did not qualify for Safe Harbor

NOTE: See *Useful Terms for Understanding Accountability* for explanations and definitions of terms and table labels used on this page.

School **BAINBRIDGE-GUILFORD HIGH SCHOOL**
 School ID **08-02-01-04-0001**

District **BAINBRIDGE-GUILFORD CENTRAL SCHOOL DISTRICT**

Graduation Rate

Accountability Status for This Indicator (2011–12) In Good Standing

Accountability Measures 1 of 1 Student groups making AYP in graduation rate
 ✓ Made AYP

How did students in each accountability group perform on graduation rate accountability measures?

Student Group (2006 Graduation-Rate Total Cohort)	Graduation			Objectives	
	AYP	Met Criterion	Graduation Rate	State Standard	Progress Target 2010-11
Accountability Groups					
All Students (70)	✓	✓	89%	80%	
Ethnicity					
American Indian or Alaska Native (0)					
Black or African American (0)					
Hispanic or Latino (0)					
Asian or Native Hawaiian/Other Pacific Islander (1)		–	–	–	
White (69)		✓	90%	80%	
Multiracial (0)					
Other Groups					
Students with Disabilities (6)		–	–	–	
Limited English Proficient (0)					
Economically Disadvantaged (24)		–	–	–	
Final AYP Determination	✓ 1 of 1				
Non-Accountability Groups					
Female (34)			91%	80%	
Male (36)			86%	80%	
Migrant (0)					

Symbols

- ✓ Made AYP
- ✗ Did not make AYP
- Fewer than 30 Graduation-Rate Total Cohort

NOTE: See *Useful Terms for Understanding Accountability* for explanations and definitions of terms and table labels used on this page.

Aspirational Goal




The Board of Regents has set an aspirational goal that 95% of students in each public school and school district will graduate within five years of first entry into grade 9. The graduation rate for the 2006 total cohort through June 2011 (after 5 years) for this school is **89%** and, therefore, this school **did not** meet this goal. The aspirational goal does not impact accountability.



School **BAINBRIDGE-GUILFORD HIGH SCHOOL**
School ID **08-02-01-04-0001**

District **BAINBRIDGE-GUILFORD CENTRAL SCHOOL DISTRICT**



Summary of 2010–11 School Performance

Performance on the State assessments in English language arts, mathematics, and science at the elementary and middle levels is reported in terms of mean scores and the percentage of tested students scoring at or above Level 2, Level 3, and Level 4. Performance on the State assessments in ELA and mathematics at the secondary level is reported in terms of the percentage of students in a cohort scoring at these levels.

English Language Arts	Percentage of students that scored at or above Level 3		Total Tested
	0%	50%	
Grade 6	50%		66
Grade 7	48%		69
Grade 8	59%		66

Mathematics			
	Percentage of students that scored at or above Level 3		2007 Total Cohort
	0%	50%	
Grade 6	50%		66
Grade 7	49%		68
Grade 8	42%		66

Science			
	Percentage of students that scored at or above Level 3		2007 Total Cohort
	0%	50%	
Grade 8	88%		67

Secondary Level	Percentage of students that scored at or above Level 3		2007 Total Cohort
	0%	50%	
English	92%		77
Mathematics	97%		77

About the Performance Level Descriptors

English Language Arts

Level 1: Below Standard

Student performance does not demonstrate an understanding of the English language arts knowledge and skills expected at this grade level.

Level 2: Meets Basic Standard

Student performance demonstrates a partial understanding of the English language arts knowledge and skills expected at this grade level.

Level 3: Meets Proficiency Standard

Student performance demonstrates an understanding of the English language arts knowledge and skills expected at this grade level.

Level 4: Exceeds Proficiency Standard

Student performance demonstrates a thorough understanding of the English language arts knowledge and skills expected at this grade level.

Mathematics

Level 1: Below Standard

Student performance does not demonstrate an understanding of the mathematics content expected at this grade level.

Level 2: Meets Basic Standard

Student performance demonstrates a partial understanding of the mathematics content expected at this grade level.

Level 3: Meets Proficiency Standard

Student performance demonstrates an understanding of the mathematics content expected at this grade level.

Level 4: Exceeds Proficiency Standard

Student performance demonstrates a thorough understanding of the mathematics content expected at this grade level.

How are Need/Resource Capacity (N/RC) categories determined?

Districts are divided into high, average, and low need categories based on their ability to meet the special needs of their students with local resources. Districts in the high need category are subdivided into four categories based on enrollment size and, in some cases, number of students per square mile. More information about the categories can be found in the *Report to the Governor and the Legislature on the Educational Status of the State's Schools* at www.p12.nysed.gov/irs.

In this section, this school's performance is compared with that of the school district and public schools Statewide.

Overview of School Performance

School **BAINBRIDGE-GUILFORD HIGH SCHOOL**
School ID **08-02-01-04-0001**

District **BAINBRIDGE-GUILFORD CENTRAL SCHOOL DISTRICT**

This School's Results in Grade 6 English Language Arts

This School

Percentage scoring at level(s):

2-4 3-4 4

School District

Percentage scoring at level(s):

2-4 3-4 4

NY State Public

Percentage scoring at level(s):

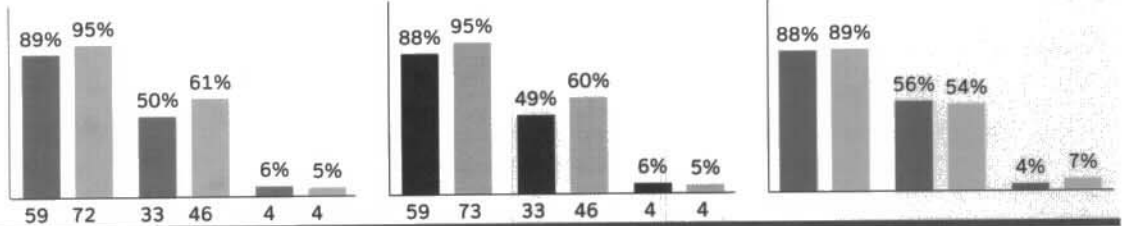
2-4 3-4 4

2011 Mean Score: 664 *Range: 644-785 662-785 694-785

2010 Mean Score: 664

100%

■ 2010-11
■ 2009-10



Number of Tested Students:

59 72 33 46 4 4

59 73 33 46 4 4

59 73 33 46 4 4

Results by Student Group

2010-11 School Year

Total Tested Percentage scoring at level(s):
2-4 3-4 4

2009-10 School Year

Total Tested Percentage scoring at level(s):
2-4 3-4 4

	2010-11 School Year				2009-10 School Year			
	Total Tested	2-4	3-4	4	Total Tested	2-4	3-4	4
All Students	66	89%	50%	6%	76	95%	61%	5%
Female	29	97%	66%	10%	39	95%	56%	8%
Male	37	84%	38%	3%	37	95%	65%	3%
American Indian or Alaska Native	-	-	-	-	-	-	-	-
Black or African American	2	-	-	-	-	-	-	-
Hispanic or Latino	2	-	-	-	2	-	-	-
Asian or Native Hawaiian/Other Pacific Islander	1	-	-	-	-	-	-	-
White	61	89%	46%	5%	74	-	-	-
Multiracial	-	-	-	-	-	-	-	-
Small Group Totals	5	100%	100%	20%	76	95%	61%	5%
General-Education Students	56	98%	57%	7%	67	97%	69%	6%
Students with Disabilities	10	40%	10%	0%	9	78%	0%	0%
English Proficient	66	89%	50%	6%	76	95%	61%	5%
Limited English Proficient	-	-	-	-	-	-	-	-
Economically Disadvantaged	23	87%	57%	4%	43	93%	58%	5%
Not Disadvantaged	43	91%	47%	7%	33	97%	64%	6%
Migrant	-	-	-	-	-	-	-	-
Not Migrant	66	89%	50%	6%	76	95%	61%	5%

NOTES

The - symbol indicates that data for a group of students have been suppressed. If a group has fewer than five students, data for that group and the next smallest group(s) are suppressed to protect the privacy of individual students.

* These ranges are for 2010-11 data only. Ranges for the 2009-10 data are available in the 2009-10 Accountability and Overview Reports.

Other Assessments

2010-11 School Year

Total Tested Number scoring at level(s):
2-4 3-4 4

2009-10 School Year

Total Tested Number scoring at level(s):
2-4 3-4 4

	2010-11 School Year				2009-10 School Year			
	Total Tested	2-4	3-4	4	Total Tested	2-4	3-4	4
New York State Alternate Assessment (NYSAA): Grade 6 Equivalent	0	-	-	-	0	-	-	-
New York State English as a Second Language Achievement Test (NYSESLAT) [†] : Grade 6	0	N/A	N/A	N/A	0	N/A	N/A	N/A
Total								
Recently Arrived LEP Students NOT Tested on the ELA NYSTP: Grade 6	0	N/A	N/A	N/A	0	N/A	N/A	N/A

[†] These counts represent recently arrived LEP students who used the NYSESLAT to fulfill the English language arts participation requirement.

School **BAINBRIDGE-GUILFORD HIGH SCHOOL**
School ID **08-02-01-04-0001**

District **BAINBRIDGE-GUILFORD CENTRAL SCHOOL DISTRICT**

This School's Results in Grade 6 Mathematics

This School

Percentage scoring at level(s):

2-4 3-4 4

School District

Percentage scoring at level(s):

2-4 3-4 4

NY State Public

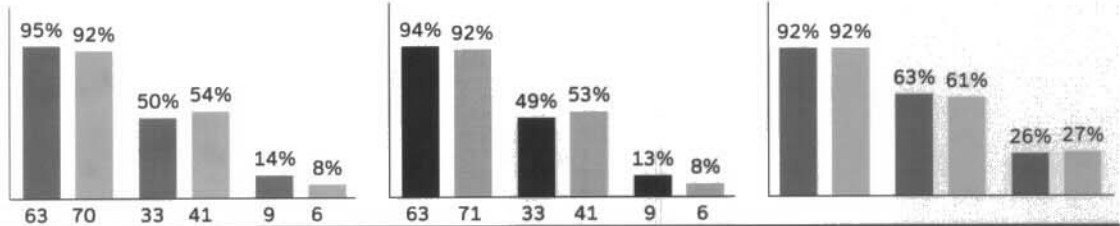
Percentage scoring at level(s):

2-4 3-4 4

2011 Mean Score: 674 *Range: 640-780 674-780 700-780

2010 Mean Score: 673 100%

■ 2010-11
■ 2009-10



Number of Tested Students:

Results by Student Group

	2010-11 School Year				2009-10 School Year			
	Total Tested	Percentage scoring at level(s):			Total Tested	Percentage scoring at level(s):		
		2-4	3-4	4		2-4	3-4	4
All Students	66	95%	50%	14%	76	92%	54%	8%
Female	29	97%	52%	17%	39	90%	41%	8%
Male	37	95%	49%	11%	37	95%	68%	8%
American Indian or Alaska Native	-	-	-	-	-	-	-	-
Black or African American	2	-	-	-	-	-	-	-
Hispanic or Latino	2	-	-	-	2	-	-	-
Asian or Native Hawaiian/Other Pacific Islander	1	-	-	-	-	-	-	-
White	61	95%	46%	11%	74	-	-	-
Multiracial	-	-	-	-	-	-	-	-
Small Group Totals	5	100%	100%	40%	76	92%	54%	8%
General-Education Students	56	100%	55%	16%	67	97%	60%	9%
Students with Disabilities	10	70%	20%	0%	9	56%	11%	0%
English Proficient	66	95%	50%	14%	76	92%	54%	8%
Limited English Proficient	-	-	-	-	-	-	-	-
Economically Disadvantaged	23	100%	35%	0%	43	88%	53%	5%
Not Disadvantaged	43	93%	58%	21%	33	97%	55%	12%
Migrant	-	-	-	-	-	-	-	-
Not Migrant	66	95%	50%	14%	76	92%	54%	8%

NOTES

The - symbol indicates that data for a group of students have been suppressed. If a group has fewer than five students, data for that group and the next smallest group(s) are suppressed to protect the privacy of individual students.

* These ranges are for 2010-11 data only. Ranges for the 2009-10 data are available in the 2009-10 Accountability and Overview Reports.

Other Assessments

	2010-11 School Year				2009-10 School Year			
	Total Tested	Number scoring at level(s):			Total Tested	Number scoring at level(s):		
		2-4	3-4	4		2-4	3-4	4
New York State Alternate Assessment (NYSAA): Grade 6 Equivalent	0				0			

School **BAINBRIDGE-GUILFORD HIGH SCHOOL**
School ID **08-02-01-04-0001**

District **BAINBRIDGE-GUILFORD CENTRAL SCHOOL DISTRICT**

This School's Results in Grade 7 English Language Arts

This School

Percentage scoring at level(s):

2-4 3-4 4

School District

Percentage scoring at level(s):

2-4 3-4 4

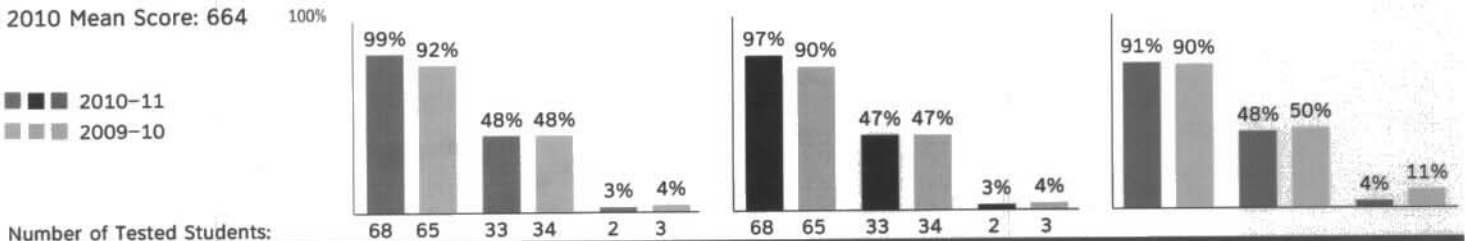
NY State Public

Percentage scoring at level(s):

2-4 3-4 4

2011 Mean Score: 665 *Range: 642-790 665-790 698-790

2010 Mean Score: 664



Number of Tested Students:

68 65 33 34 2 3

68 65 33 34 2 3

68 65 33 34 2 3

Results by Student Group

2010-11 School Year

Total Tested Percentage scoring at level(s):
2-4 3-4 4

2009-10 School Year

Total Tested Percentage scoring at level(s):
2-4 3-4 4

	2010-11 School Year				2009-10 School Year			
	Total Tested	2-4	3-4	4	Total Tested	2-4	3-4	4
All Students	69	99%	48%	3%	71	92%	48%	4%
Female	35	100%	46%	3%	42	93%	60%	5%
Male	34	97%	50%	3%	29	90%	31%	3%
American Indian or Alaska Native	-	-	-	-	-	-	-	-
Black or African American	-	-	-	-	-	-	-	-
Hispanic or Latino	2	-	-	-	3	-	-	-
Asian or Native Hawaiian/Other Pacific Islander	-	-	-	-	1	-	-	-
White	67	-	-	-	67	-	-	-
Multiracial	-	-	-	-	-	-	-	-
Small Group Totals	69	99%	48%	3%	71	92%	48%	4%
General-Education Students	61	100%	52%	3%	61	93%	51%	5%
Students with Disabilities	8	88%	13%	0%	10	80%	30%	0%
English Proficient	68	-	-	-	71	92%	48%	4%
Limited English Proficient	1	-	-	-	-	-	-	-
Economically Disadvantaged	39	100%	41%	3%	31	87%	35%	0%
Not Disadvantaged	30	97%	57%	3%	40	95%	58%	8%
Migrant	-	-	-	-	-	-	-	-
Not Migrant	69	99%	48%	3%	71	92%	48%	4%

NOTES

The - symbol indicates that data for a group of students have been suppressed. If a group has fewer than five students, data for that group and the next smallest group(s) are suppressed to protect the privacy of individual students.

* These ranges are for 2010-11 data only. Ranges for the 2009-10 data are available in the 2009-10 Accountability and Overview Reports.

Other Assessments

2010-11 School Year

Total Tested Number scoring at level(s):
2-4 3-4 4

2009-10 School Year

Total Tested Number scoring at level(s):
2-4 3-4 4

	2010-11 School Year				2009-10 School Year			
	Total Tested	2-4	3-4	4	Total Tested	2-4	3-4	4
New York State Alternate Assessment (NYSAA): Grade 7 Equivalent	0	-	-	-	0	-	-	-
New York State English as a Second Language Achievement Test (NYSESLAT) [†] : Grade 7	0	N/A	N/A	N/A	0	N/A	N/A	N/A
Total	0	N/A	N/A	N/A	0	N/A	N/A	N/A
Recently Arrived LEP Students NOT Tested on the ELA NYSTP: Grade 7	0	N/A	N/A	N/A	0	N/A	N/A	N/A

[†] These counts represent recently arrived LEP students who used the NYSESLAT to fulfill the English language arts participation requirement.

School **BAINBRIDGE-GUILFORD HIGH SCHOOL**
School ID **08-02-01-04-0001**

District **BAINBRIDGE-GUILFORD CENTRAL SCHOOL DISTRICT**

This School's Results in Grade 7 Mathematics

This School

Percentage scoring at level(s):

2-4 3-4 4

School District

Percentage scoring at level(s):

2-4 3-4 4

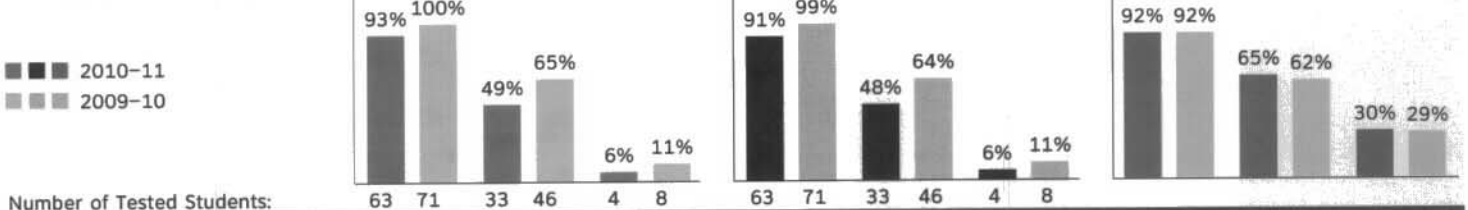
NY State Public

Percentage scoring at level(s):

2-4 3-4 4

2011 Mean Score: 667 *Range: 639-800 670-800 694-800

2010 Mean Score: 674



Number of Tested Students:

63

71

33

46

4

8

63

71

33

46

4

8

92

92

65

62

30

29

Results by Student Group

2010-11 School Year

Total Tested Percentage scoring at level(s):
2-4 3-4 4

2009-10 School Year

Total Tested Percentage scoring at level(s):
2-4 3-4 4

	2010-11 School Year				2009-10 School Year			
	Total Tested	2-4	3-4	4	Total Tested	2-4	3-4	4
All Students	68	93%	49%	6%	71	100%	65%	11%
Female	35	89%	43%	3%	42	100%	69%	14%
Male	33	97%	55%	9%	29	100%	59%	7%
American Indian or Alaska Native								
Black or African American								
Hispanic or Latino	2	-	-	-	3	-	-	-
Asian or Native Hawaiian/Other Pacific Islander					1	-	-	-
White	66	-	-	-	67	-	-	-
Multiracial								
Small Group Totals	68	93%	49%	6%	71	100%	65%	11%
General-Education Students	60	98%	55%	7%	61	100%	75%	13%
Students with Disabilities	8	50%	0%	0%	10	100%	0%	0%
English Proficient	67	-	-	-	71	100%	65%	11%
Limited English Proficient	1	-	-	-				
Economically Disadvantaged	39	90%	38%	3%	31	100%	58%	0%
Not Disadvantaged	29	97%	62%	10%	40	100%	70%	20%
Migrant								
Not Migrant	68	93%	49%	6%	71	100%	65%	11%

NOTES

The - symbol indicates that data for a group of students have been suppressed. If a group has fewer than five students, data for that group and the next smallest group(s) are suppressed to protect the privacy of individual students.

* These ranges are for 2010-11 data only. Ranges for the 2009-10 data are available in the 2009-10 Accountability and Overview Reports.

Other Assessments

2010-11 School Year

Total Tested Number scoring at level(s):
2-4 3-4 4

2009-10 School Year

Total Tested Number scoring at level(s):
2-4 3-4 4

New York State Alternate Assessment (NYSAA): Grade 7 Equivalent

0

0

Overview of School Performance

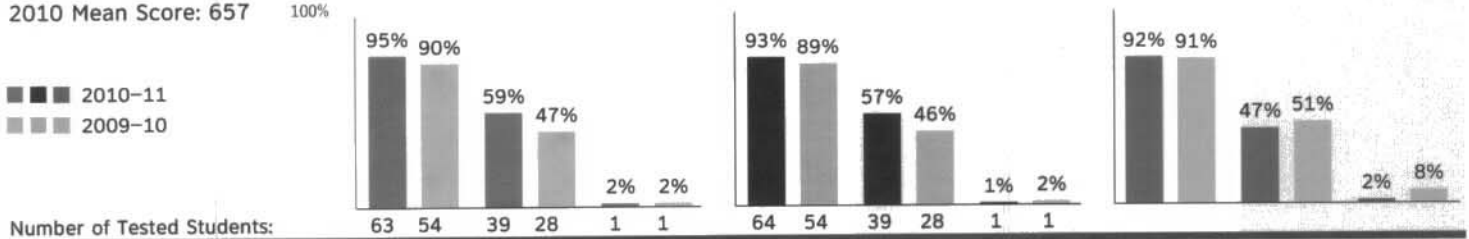
School **BAINBRIDGE-GUILFORD HIGH SCHOOL**
 School ID **08-02-01-04-0001**

District **BAINBRIDGE-GUILFORD CENTRAL SCHOOL DISTRICT**

This School's Results in Grade 8 English Language Arts

This School				School District				NY State Public			
Percentage scoring at level(s):				Percentage scoring at level(s):				Percentage scoring at level(s):			
2-4	3-4	4		2-4	3-4	4		2-4	3-4	4	

2011 Mean Score: 659 *Range: 628-790 658-790 699-790
 2010 Mean Score: 657



Number of Tested Students:

Results by Student Group

	2010-11 School Year				2009-10 School Year			
	Total Tested	Percentage scoring at level(s):			Total Tested	Percentage scoring at level(s):		
		2-4	3-4	4		2-4	3-4	4
All Students	66	95%	59%	2%	60	90%	47%	2%
Female	37	97%	68%	0%	24	96%	58%	0%
Male	29	93%	48%	3%	36	86%	39%	3%
American Indian or Alaska Native	-	-	-	-	-	-	-	-
Black or African American	-	-	-	-	-	-	-	-
Hispanic or Latino	2	-	-	-	2	-	-	-
Asian or Native Hawaiian/Other Pacific Islander	1	-	-	-	1	-	-	-
White	63	-	-	-	57	-	-	-
Multiracial	-	-	-	-	-	-	-	-
Small Group Totals	66	95%	59%	2%	60	90%	47%	2%
General-Education Students	59	98%	64%	2%	50	98%	56%	2%
Students with Disabilities	7	71%	14%	0%	10	50%	0%	0%
English Proficient	66	95%	59%	2%	60	90%	47%	2%
Limited English Proficient	-	-	-	-	-	-	-	-
Economically Disadvantaged	29	93%	55%	0%	24	92%	38%	0%
Not Disadvantaged	37	97%	62%	3%	36	89%	53%	3%
Migrant	-	-	-	-	-	-	-	-
Not Migrant	66	95%	59%	2%	60	90%	47%	2%

NOTES

The - symbol indicates that data for a group of students have been suppressed. If a group has fewer than five students, data for that group and the next smallest group(s) are suppressed to protect the privacy of individual students.

* These ranges are for 2010-11 data only. Ranges for the 2009-10 data are available in the 2009-10 Accountability and Overview Reports.

Other Assessments

	2010-11 School Year				2009-10 School Year			
	Total Tested	Number scoring at level(s):			Total Tested	Number scoring at level(s):		
		2-4	3-4	4		2-4	3-4	4
New York State Alternate Assessment (NYSAA): Grade 8 Equivalent	0	-	-	-	0	-	-	-
New York State English as a Second Language Achievement Test (NYSESLAT)†: Grade 8	0	N/A	N/A	N/A	0	N/A	N/A	N/A
Recently Arrived LEP Students NOT Tested on the ELA NYSTP: Grade 8	0	N/A	N/A	N/A	0	N/A	N/A	N/A

† These counts represent recently arrived LEP students who used the NYSESLAT to fulfill the English language arts participation requirement.

School **BAINBRIDGE-GUILFORD HIGH SCHOOL**
School ID **08-02-01-04-0001**

District **BAINBRIDGE-GUILFORD CENTRAL SCHOOL DISTRICT**

This School's Results in Grade 8 Mathematics

This School

Percentage scoring at level(s):

2-4 3-4 4

School District

Percentage scoring at level(s):

2-4 3-4 4

NY State Public

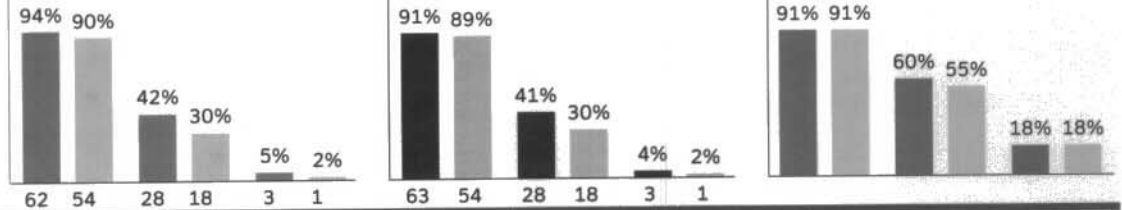
Percentage scoring at level(s):

2-4 3-4 4

2011 Mean Score: 673 *Range: 639-775 674-775 704-775

2010 Mean Score: 664 100%

■ 2010-11
■ 2009-10



Number of Tested Students:

Results by Student Group

2010-11 School Year

Total Tested Percentage scoring at level(s):
2-4 3-4 4

2009-10 School Year

Total Tested Percentage scoring at level(s):
2-4 3-4 4

	2010-11 School Year				2009-10 School Year			
	Total Tested	2-4	3-4	4	Total Tested	2-4	3-4	4
All Students	66	94%	42%	5%	60	90%	30%	2%
Female	37	92%	46%	5%	24	92%	42%	0%
Male	29	97%	38%	3%	36	89%	22%	3%
American Indian or Alaska Native	-	-	-	-	-	-	-	-
Black or African American	-	-	-	-	-	-	-	-
Hispanic or Latino	2	-	-	-	2	-	-	-
Asian or Native Hawaiian/Other Pacific Islander	1	-	-	-	1	-	-	-
White	63	-	-	-	57	-	-	-
Multiracial	-	-	-	-	-	-	-	-
Small Group Totals	66	94%	42%	5%	60	90%	30%	2%
General-Education Students	59	97%	47%	5%	50	98%	36%	2%
Students with Disabilities	7	71%	0%	0%	10	50%	0%	0%
English Proficient	66	94%	42%	5%	60	90%	30%	2%
Limited English Proficient	-	-	-	-	-	-	-	-
Economically Disadvantaged	29	90%	38%	0%	24	92%	17%	0%
Not Disadvantaged	37	97%	46%	8%	36	89%	39%	3%
Migrant	-	-	-	-	-	-	-	-
Not Migrant	66	94%	42%	5%	60	90%	30%	2%

NOTES

The - symbol indicates that data for a group of students have been suppressed. If a group has fewer than five students, data for that group and the next smallest group(s) are suppressed to protect the privacy of individual students.

* These ranges are for 2010-11 data only. Ranges for the 2009-10 data are available in the 2009-10 *Accountability and Overview Reports*.

Other Assessments

2010-11 School Year

Total Tested Number scoring at level(s):
2-4 3-4 4

2009-10 School Year

Total Tested Number scoring at level(s):
2-4 3-4 4

New York State Alternate Assessment (NYSAA): Grade 8 Equivalent

0

0

School **BAINBRIDGE-GUILFORD HIGH SCHOOL**
School ID **08-02-01-04-0001**

District **BAINBRIDGE-GUILFORD CENTRAL SCHOOL DISTRICT**

This School's Results in Grade 8 Science

This School

Percentage scoring at level(s):

2-4 3-4 4

School District

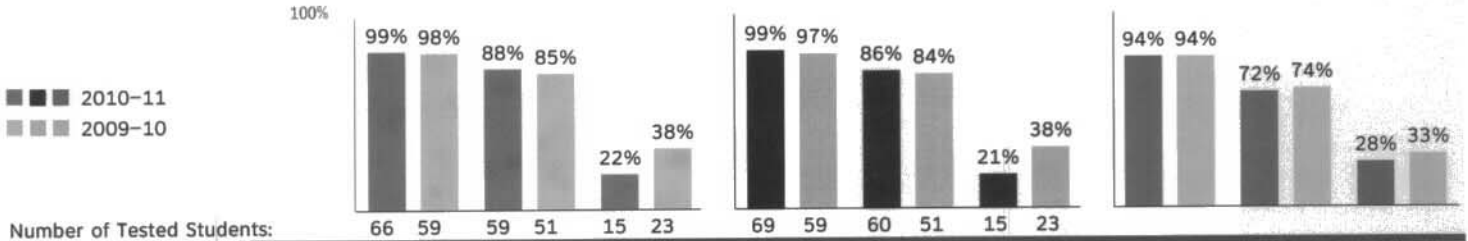
Percentage scoring at level(s):

2-4 3-4 4

NY State Public

Percentage scoring at level(s):

2-4 3-4 4



Number of Tested Students:

Results by Student Group

	2010-11 School Year				2009-10 School Year			
	Total Tested	Percentage scoring at level(s):			Total Tested	Percentage scoring at level(s):		
		2-4	3-4	4		2-4	3-4	4
All Students	67	99%	88%	22%	60	98%	85%	38%
Female	37	100%	86%	24%	24	100%	88%	54%
Male	30	97%	90%	20%	36	97%	83%	28%
American Indian or Alaska Native	-	-	-	-	-	-	-	-
Black or African American	-	-	-	-	-	-	-	-
Hispanic or Latino	2	-	-	-	2	-	-	-
Asian or Native Hawaiian/Other Pacific Islander	1	-	-	-	1	-	-	-
White	64	-	-	-	57	-	-	-
Multiracial	-	-	-	-	-	-	-	-
Small Group Totals	67	99%	88%	22%	60	98%	85%	38%
General-Education Students	60	100%	90%	25%	50	98%	92%	46%
Students with Disabilities	7	86%	71%	0%	10	100%	50%	0%
English Proficient	67	99%	88%	22%	60	98%	85%	38%
Limited English Proficient	-	-	-	-	-	-	-	-
Economically Disadvantaged	29	100%	83%	14%	24	96%	88%	29%
Not Disadvantaged	38	97%	92%	29%	36	100%	83%	44%
Migrant	-	-	-	-	-	-	-	-
Not Migrant	67	99%	88%	22%	60	98%	85%	38%

NOTES

The - symbol indicates that data for a group of students have been suppressed. If a group has fewer than five students, data for that group and the next smallest group(s) are suppressed to protect the privacy of individual students.

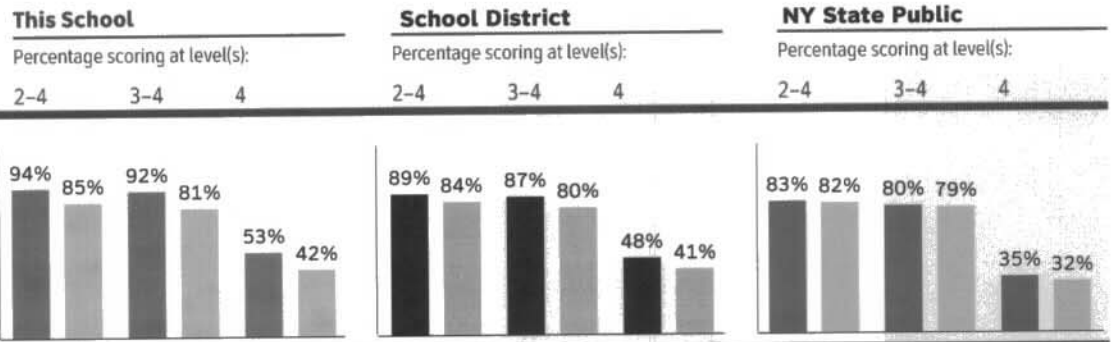
Other Assessments

	2010-11 School Year				2009-10 School Year			
	Total Tested	Number scoring at level(s):			Total Tested	Number scoring at level(s):		
		2-4	3-4	4		2-4	3-4	4
New York State Alternate Assessment (NYSAA): Grade 8 Equivalent	0	-	-	-	0	-	-	-
Regents Science	0	-	-	-	0	-	-	-

School **BAINBRIDGE-GUILFORD HIGH SCHOOL**
School ID **08-02-01-04-0001**

District **BAINBRIDGE-GUILFORD CENTRAL SCHOOL DISTRICT**

This School's Total Cohort* Results in Secondary-Level English after Four Years of Instruction



Results by Student Group

	2007 Cohort			2006 Cohort**				
	Number of Students	Percentage scoring at level(s):			Number of Students	Percentage scoring at level(s):		
		2-4	3-4	4		2-4	3-4	4
All Students	77	94%	92%	53%	72	85%	81%	42%
Female	40	98%	98%	68%	34	94%	88%	50%
Male	37	89%	86%	38%	38	76%	74%	34%
American Indian or Alaska Native								
Black or African American								
Hispanic or Latino								
Asian or Native					1	-	-	-
Hawaiian/Other Pacific Islander								
White	77	94%	92%	53%	71	-	-	-
Multiracial								
Small Group Totals					72	85%	81%	42%
General-Education Students	68	97%	97%	60%	65	88%	85%	46%
Students with Disabilities	9	67%	56%	0%	7	57%	43%	0%
English Proficient	77	94%	92%	53%	72	85%	81%	42%
Limited English Proficient								
Economically Disadvantaged	25	96%	96%	48%	26	77%	77%	35%
Not Disadvantaged	52	92%	90%	56%	46	89%	83%	46%
Migrant								
Not Migrant	77	94%	92%	53%	72	85%	81%	42%

NOTES

The - symbol indicates that data for a group of students have been suppressed. If a group has fewer than five students, data for that group and the next smallest group(s) are suppressed to protect the privacy of individual students.

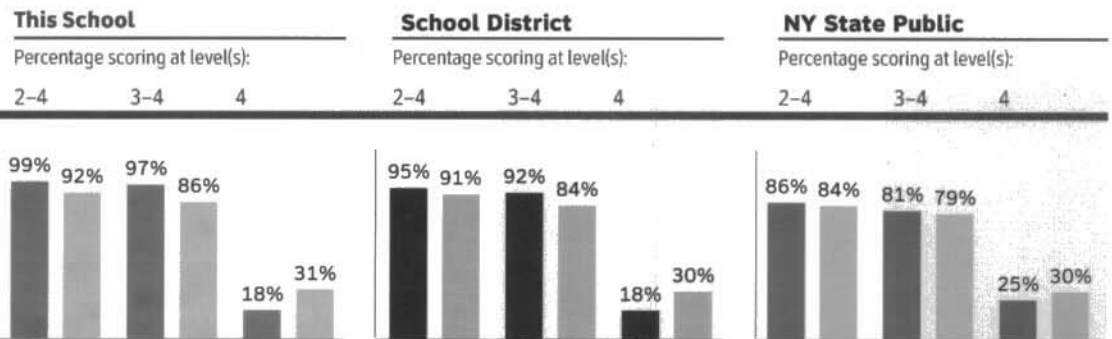
* A total cohort consists of all students who first entered Grade 9 in a particular year, and all ungraded students with disabilities who reached their seventeenth birthday in that year, and were enrolled in the school/district for five months. Students are excluded from the cohort if they transferred to another school district, nonpublic school, or criminal justice facility, or left the U.S. and its territories or died before the report date. Statewide total cohort also includes students who were enrolled for fewer than five months.

** 2006 cohort data are those reported in the 2009-10 *Accountability and Overview Report*.

School **BAINBRIDGE-GUILFORD HIGH SCHOOL**
School ID **08-02-01-04-0001**

District **BAINBRIDGE-GUILFORD CENTRAL SCHOOL DISTRICT**

This School's Total Cohort* Results in Secondary-Level Mathematics after Four Years of Instruction



Results by Student Group

	2007 Cohort				2006 Cohort**			
	Number of Students	Percentage scoring at level(s):			Number of Students	Percentage scoring at level(s):		
		2-4	3-4	4		2-4	3-4	4
All Students	77	99%	97%	18%	72	92%	86%	31%
Female	40	100%	100%	20%	34	94%	88%	26%
Male	37	97%	95%	16%	38	89%	84%	34%
American Indian or Alaska Native								
Black or African American								
Hispanic or Latino								
Asian or Native								
Hawaiian/Other Pacific Islander					1	-	-	-
White	77	99%	97%	18%	71	-	-	-
Multiracial								
Small Group Totals					72	92%	86%	31%
General-Education Students	68	99%	99%	19%	65	92%	89%	32%
Students with Disabilities	9	100%	89%	11%	7	86%	57%	14%
English Proficient	77	99%	97%	18%	72	92%	86%	31%
Limited English Proficient								
Economically Disadvantaged	25	100%	100%	20%	26	88%	81%	27%
Not Disadvantaged	52	98%	96%	17%	46	93%	89%	33%
Migrant								
Not Migrant	77	99%	97%	18%	72	92%	86%	31%

NOTES

The - symbol indicates that data for a group of students have been suppressed. If a group has fewer than five students, data for that group and the next smallest group(s) are suppressed to protect the privacy of individual students.

* A total cohort consists of all students who first entered Grade 9 in a particular year, and all ungraded students with disabilities who reached their seventeenth birthday in that year, and were enrolled in the school/district for five months. Students are excluded from the cohort if they transferred to another school district, nonpublic school, or criminal justice facility, or left the U.S. and its territories or died before the report date. Statewide total cohort also includes students who were enrolled for fewer than five months.

** 2006 cohort data are those reported in the 2009-10 *Accountability and Overview Report*.



The New York State School Report Card

Comprehensive Information Report 2010-11

School **BAINBRIDGE-GUILFORD HIGH SCHOOL**
 District **BAINBRIDGE-GUILFORD CENTRAL SCHOOL DISTRICT**
 School ID **08-02-01-04-0001**
 Principal **WILLIAM ZAKRAJSEK**
 Telephone **(607) 967-6323**
 Grades **6-12**

Regents Exams

		All Students				General-Education Students				Students with Disabilities				
		Total	Percentage of students			Total	Percentage of students			Total	Percentage of students			
		Tested	scoring at or above:			Tested	scoring at or above:			Tested	scoring at or above:			
		55	65	85	55	65	85	55	65	85				
Comprehensive English	2010-11	68	100%	99%	60%	64	-	-	-	4	-	-	-	
	2009-10	81	98%	95%	53%	75	100%	97%	57%	6	67%	67%	0%	
	2008-09	60	92%	85%	45%	52	96%	90%	52%	8	63%	50%	0%	
Integrated Algebra	2010-11	65	98%	91%	15%	56	100%	98%	18%	9	89%	44%	0%	
	2009-10	65	97%	89%	12%	57	98%	95%	14%	8	88%	50%	0%	
	2008-09	69	99%	97%	0%	62	98%	97%	0%	7	100%	100%	0%	
Geometry	2010-11	44	98%	86%	5%	43	-	-	-	1	-	-	-	
	2009-10	47	98%	85%	0%	47	98%	85%	0%	0				
	2008-09	60	93%	88%	5%	56	-	-	-	4	-	-	-	
Algebra 2/Trigonometry	2010-11	32	84%	63%	16%	32	84%	63%	16%	0				
	2009-10	40	93%	83%	13%	38	-	-	-	2	-	-	-	
	2008-09	N/A	N/A	N/A	N/A	N/A	N/A	N/A	N/A	N/A	N/A	N/A	N/A	
Global History and Geography	2010-11	65	89%	78%	18%	60	90%	78%	20%	5	80%	80%	0%	
	2009-10	80	90%	76%	31%	72	94%	81%	33%	8	50%	38%	13%	
	2008-09	81	94%	79%	35%	72	94%	82%	38%	9	89%	56%	11%	
U.S. History and Government	2010-11	52	94%	94%	46%	49	-	-	-	3	-	-	-	
	2009-10	88	99%	98%	35%	80	100%	99%	36%	8	88%	88%	25%	
	2008-09	74	99%	91%	41%	67	100%	93%	45%	7	86%	71%	0%	
Living Environment	2010-11	61	100%	95%	43%	53	100%	100%	47%	8	100%	63%	13%	
	2009-10	57	98%	98%	51%	50	100%	100%	54%	7	86%	86%	29%	
	2008-09	73	100%	97%	52%	61	100%	98%	61%	12	100%	92%	8%	
Physical Setting/Earth Science	2010-11	55	93%	78%	31%	51	-	-	-	4	-	-	-	
	2009-10	73	99%	88%	23%	68	99%	91%	25%	5	100%	40%	0%	
	2008-09	78	95%	90%	35%	75	-	-	-	3	-	-	-	
Physical Setting/Chemistry	2010-11	54	94%	52%	4%	54	94%	52%	4%	0				
	2009-10	50	82%	56%	6%	48	-	-	-	2	-	-	-	
	2008-09	49	80%	51%	4%	45	-	-	-	4	-	-	-	
Physical Setting/Physics	2010-11	19	79%	53%	11%	18	-	-	-	1	-	-	-	
	2009-10	17	71%	53%	6%	16	-	-	-	1	-	-	-	
	2008-09	31	81%	77%	19%	31	81%	77%	19%	0				

NOTE

The — symbol indicates that data for a group of students have been suppressed. If a group has fewer than five students, data for that group and the next smallest group(s) are suppressed to protect the privacy of individual students.

Regents Exams in Languages Other Than English

School **BAINBRIDGE-GUILFORD HIGH SCHOOL**
 School ID **08-02-01-04-0001**

District **BAINBRIDGE-GUILFORD CENTRAL SCHOOL DISTRICT**

Regents Exams

		All Students			General-Education Students			Students with Disabilities					
		Total	Percentage of students		Total	Percentage of students		Total	Percentage of students				
		Tested	scoring at or above:		Tested	scoring at or above:		Tested	scoring at or above:				
		55	65	85	55	65	85	55	65	85			
Comprehensive French	2010-11	15	100%	100%	67%	15	100%	100%	67%	0			
	2009-10	28	100%	86%	46%	28	100%	86%	46%	0			
	2008-09	22	100%	100%	73%	22	100%	100%	73%	0			
Comprehensive Italian	2010-11	0				0				0			
	2009-10	0				0				0			
	2008-09	0				0				0			
Comprehensive Spanish	2010-11	20	100%	100%	65%	20	100%	100%	65%	0			
	2009-10	23	100%	100%	57%	23	100%	100%	57%	0			
	2008-09	28	100%	100%	75%	27	-	-	-	1	-	-	-

NOTE

The — symbol indicates that data for a group of students have been suppressed. If a group has fewer than five students, data for that group and the next smallest group(s) are suppressed to protect the privacy of individual students.

Regents Competency Tests

School **BAINBRIDGE-GUILFORD HIGH SCHOOL**
 School ID **08-02-01-04-0001**

District **BAINBRIDGE-GUILFORD CENTRAL SCHOOL DISTRICT**

Regents Competency Tests

		All Students		General-Education Students		Students with Disabilities	
		Total Tested	Percent Passing:	Total Tested	Percent Passing:	Total Tested	Percent Passing:
Mathematics	2010-11	1	-	0		1	-
	2009-10	1	-	0		1	-
	2008-09	3	-	0		3	-
Science	2010-11	6	83%	0		6	83%
	2009-10	1	-	0		1	-
	2008-09	0		0		0	
Reading	2010-11	0		0		0	
	2009-10	3	-	0		3	-
	2008-09	3	-	0		3	-
Writing	2010-11	1	-	0		1	-
	2009-10	2	-	0		2	-
	2008-09	2	-	0		2	-
Global Studies	2010-11	3	-	2	-	1	-
	2009-10	6	50%	1	-	5	-
	2008-09	1	-	0		1	-
U.S. History and Government	2010-11	2	-	1	-	1	-
	2009-10	1	-	0		1	-
	2008-09	1	-	0		1	-

NOTE

The — symbol indicates that data for a group of students have been suppressed. If a group has fewer than five students, data for that group and the next smallest group(s) are suppressed to protect the privacy of individual students.

English as a Second Language Achievement Test

School **BAINBRIDGE-GUILFORD HIGH SCHOOL**
 School ID **08-02-01-04-0001**

District **BAINBRIDGE-GUILFORD CENTRAL SCHOOL DISTRICT**

New York State English as a Second Language Achievement Test (NYSESLAT)

		All Students				General-Education Students				Students with Disabilities			
		Total	Percent of students scoring			Total	Percent of students scoring			Total	Percent of students scoring		
		Tested	in each performance level:			Tested	in each performance level:			Tested	in each performance level:		
		Begin.	Interm.	Adv.	Prof.	Begin.	Interm.	Adv.	Prof.	Begin.	Interm.	Adv.	Prof.
Listening and Speaking (Grades K-1)	2010-11	0				0				0			
	2009-10	0				0				0			
	2008-09	0				0				0			
Reading and Writing (Grades K-1)	2010-11	0				0				0			
	2009-10	0				0				0			
	2008-09	0				0				0			
Listening and Speaking (Grades 2-4)	2010-11	0				0				0			
	2009-10	0				0				0			
	2008-09	0				0				0			
Reading and Writing (Grades 2-4)	2010-11	0				0				0			
	2009-10	0				0				0			
	2008-09	0				0				0			
Listening and Speaking (Grades 5-6)	2010-11	0				0				0			
	2009-10	1	-	-	-	0				1	-	-	-
	2008-09	0				0				0			
Reading and Writing (Grades 5-6)	2010-11	0				0				0			
	2009-10	1	-	-	-	0				1	-	-	-
	2008-09	0				0				0			
Listening and Speaking (Grades 7-8)	2010-11	1	-	-	-	0				1	-	-	-
	2009-10	0				0				0			
	2008-09	0				0				0			
Reading and Writing (Grades 7-8)	2010-11	1	-	-	-	0				1	-	-	-
	2009-10	0				0				0			
	2008-09	0				0				0			
Listening and Speaking (Grades 9-12)	2010-11	0				0				0			
	2009-10	0				0				0			
	2008-09	0				0				0			
Reading and Writing (Grades 9-12)	2010-11	0				0				0			
	2009-10	0				0				0			
	2008-09	0				0				0			

NOTE

The — symbol indicates that data for a group of students have been suppressed. If a group has fewer than five students, data for that group and the next smallest group(s) are suppressed to protect the privacy of individual students.

Other Assessments

School **BAINBRIDGE-GUILFORD HIGH SCHOOL**
 School ID **08-02-01-04-0001**

District **BAINBRIDGE-GUILFORD CENTRAL SCHOOL DISTRICT**

2007 Total Cohort Performance on Regents Exams After Four Years

	All Students				General-Education Students				Students with Disabilities			
	Cohort Enrollment	Percentage of students scoring:			Cohort Enrollment	Percentage of students scoring:			Cohort Enrollment	Percentage of students scoring:		
		55-64	65-84	85-100		55-64	65-84	85-100		55-64	65-84	85-100
Global History and Geography	77	9%	51%	38%	68	7%	50%	41%	9	22%	56%	11%
U.S. History and Government	77	0%	51%	47%	68	0%	49%	50%	9	0%	67%	22%
Science	77	1%	40%	57%	68	0%	37%	62%	9	11%	67%	22%

New York State Alternate Assessments (NYSAA) 2010-11

All Students

Total Tested	Number of students scoring at Level:			
	1	2	3	4

Secondary Level

English Language Arts	1	-	-	-	-
Mathematics	1	-	-	-	-
Social Studies	1	-	-	-	-
Science	1	-	-	-	-

The New York State Alternate Assessment (NYSAA) is for students with severe cognitive disabilities. Results for students taking the NYSAA in English language arts, mathematics, and science at the elementary and middle levels are available in the *Accountability and Overview Report* part of *The New York State Report Card*.

NOTE

The — symbol indicates that data for a group of students have been suppressed. If a group has fewer than five students, data for that group and the next smallest group(s) are suppressed to protect the privacy of individual students.

High School Information

School **BAINBRIDGE-GUILFORD HIGH SCHOOL**
School ID **08-02-01-04-0001**

District **BAINBRIDGE-GUILFORD CENTRAL SCHOOL DISTRICT**

High School Completers

		All Students		General-Education Students		Students with Disabilities	
		Number of Students	Percentage of Graduates	Number of Students	Percentage of Graduates	Number of Students	Percentage of Graduates
Total Graduates	2010–11	74		66		8	
	2009–10	66		60		6	
	2008–09	74		69		5	
Receiving a Regents Diploma	2010–11	66	89%	62	94%	4	50%
	2009–10	51	77%	49	82%	2	33%
	2008–09	67	91%	65	94%	2	40%
Receiving a Regents Diploma with Advanced Designation	2010–11	27	36%	26	39%	1	13%
	2009–10	21	32%	21	35%	0	0%
	2008–09	31	42%	30	43%	1	20%
Receiving an Individualized Education Program (IEP) Diploma	2010–11	0		0		0	
	2009–10	2	N/A	0		2	N/A
	2008–09	1	N/A	0		1	N/A

NOTE Students receiving Regents diplomas and Regents diplomas with advanced designation are considered graduates; recipients of IEP diplomas are not.

High School Noncompleters

		All Students		General-Education Students		Students with Disabilities	
		Number of Students	Percentage of Students	Number of Students	Percentage of Students	Number of Students	Percentage of Students
Dropped Out	2010–11	6	2%	5	2%	1	3%
	2009–10	4	1%	4	1%	0	0%
	2008–09	4	1%	4	1%	0	0%
Entered Approved High School Equivalency Preparation Program	2010–11	0	0%	0	0%	0	0%
	2009–10	0	0%	0	0%	0	0%
	2008–09	0	0%	0	0%	0	0%
Total Noncompleters	2010–11	6	2%	5	2%	1	3%
	2009–10	4	1%	4	1%	0	0%
	2008–09	4	1%	4	1%	0	0%

Post-secondary Plans of 2010–11 Completers

	All Students		General-Education Students		Students with Disabilities	
	Number of Students	Percentage of Students	Number of Students	Percentage of Students	Number of Students	Percentage of Students
To 4-year College	30	41%	28	42%	2	25%
To 2-year College	28	38%	28	42%	0	0%
To Other Post-secondary	3	4%	3	5%	0	0%
To the Military	3	4%	2	3%	1	13%
To Employment	9	12%	4	6%	5	63%
To Adult Services	0	0%	0	0%	0	0%
To Other Known Plans	1	1%	1	2%	0	0%
Plan Unknown	0	0%	0	0%	0	0%

More Information about the School

School **BAINBRIDGE-GUILFORD HIGH SCHOOL**
School ID **08-02-01-04-0001**

District **BAINBRIDGE-GUILFORD CENTRAL SCHOOL
DISTRICT**

Financial Information

**2010–11 Estimated Percentage of Students
from Families Receiving Public Assistance**

21-30%

The New York State School Report Card Fiscal Accountability Supplement for Bainbridge-Guilford Central School District

New York State Education Law and the Commissioner's Regulations require the attachment of the NYS School Report Card to the public school district budget proposal. The regulations require that certain expenditure ratios for general education and special education students be reported and compared with ratios for similar districts and all public schools. The required ratios for this district are reported below.

2010-2011 School Year		General Education	Special Education
This School District	Instructional Expenditures	\$7,913,826	\$3,162,809
	Pupils	814	108
	Expenditures Per Pupil	\$9,722	\$29,285
Similar District Group	Instructional Expenditures	\$7,820,663,210	\$3,172,283,304
	Pupils	798,424	110,978
	Expenditures Per Pupil	\$9,795	\$28,585
Total of All School Districts in NY State	Instructional Expenditures	\$29,473,160,406	\$12,260,104,540
	Pupils	2,688,528	412,226
	Expenditures Per Pupil	\$10,963	\$29,741
Similar District Group Description: Average Need/Resource Capacity			

Instructional Expenditures for General Education are K-12 expenditures for classroom instruction (excluding Special Education) plus a proration of building level administrative and instructional support expenditures. These expenditures include amounts for instruction of students with disabilities in a general-education setting. District expenditures, such as transportation, debt service and district-wide administration are not included.

The pupil count for General Education is K-12 average daily membership plus K-12 pupils for whom the district pays tuition to another school district. This number represents all pupils, including those classified as having disabilities and those not classified, excluding only students with disabilities placed out of district. For districts in which a county jail is located, this number includes incarcerated youth to whom the district must provide an education program.

Instructional Expenditures for Special Education are K-12 expenditures for students with disabilities (including summer special education expenditures) plus a proration of building-level administrative and instructional support expenditures. District expenditures, such as transportation, debt service and district-wide administration are not included.

The pupil count for Special Education is a count of K-12 students with disabilities for the 2010-11 school year plus students for whom the district receives tuition from another district plus students for whom the district pays tuition to another district. Students attending the State schools at Rome and Batavia, private placements and out-of-state placements are included.

Instructional Expenditures Per Pupil is the simple arithmetic ratio of Instructional Expenditures to Pupils. The total cost of instruction for students with disabilities may include both general- and special-education expenditures. Special-education services provided in the general-education classroom may benefit students not classified as having disabilities.

2010-2011 School Year	This School District	Similar District Group	Total of All School Districts in NY State
Total Expenditures Per Pupil	\$18,731	\$18,876	\$20,410

Total Expenditures Per Pupil is the simple arithmetic ratio of Total Expenditures to Pupils. Total Expenditures include district expenditures for classroom instruction, as well as expenditures for transportation, debt service, community service and district-wide administration that are not included in the Instructional Expenditure values for General Education and Special Education. As such, the sum of General Education and Special Education Instructional Expenditures does not equal the Total Expenditures.

The numbers used to compute the statistics on this page were collected on the State Aid Form A, the State Aid Form F, the School District Annual Financial Report (ST-3), and from the Student Information Repository System (SIRS).

The New York State School Report Card Information about Students with Disabilities for Bainbridge-Guilford Central School District

New York State Education Law and the Commissioner's Regulations require the attachment of the NYS School Report Card to the public school district budget proposal. The regulations require reporting students with disabilities by the percent of time they are in general education classrooms and the classification rate of students with disabilities. These data are to be compared with percentages for similar districts and all public schools. The required percentages for this district are reported below.

Student Counts as of October 4, 2011	This School District		Similar District Group	Total of All School Districts in NY State
	Count of Students with Disabilities	Percentage of Students with Disabilities	Percentage of Students with Disabilities	Percentage of Students with Disabilities
80% or more	61	61.6%	58.1%	57.3%
40% to 79%	11	11.1%	18.8%	11.7%
Less than 40%	25	25.3%	16.7%	22.1%
Separate Settings	2	2.0%	4.1%	6.1%
Other Settings	0	0.0%	2.3%	2.8%

The source data for the statistics in this table were reported through the Student Information Repository System (SIRS) and verified in Verification Report 5. The counts are numbers of students reported in the least restrictive environment categories for school-age programs (ages 6-21) on October 4, 2011. The percentages represent the amount of time students with disabilities are in general-education classrooms, regardless of the amount and cost of special education services they receive. Rounding of percentage values may cause them to sum to a number slightly different from 100%.

School-age Students with Disabilities Classification Rate

2011-12 School Year	This School District	Similar District Group	Total of All School Districts in NY State
Special Ed Classification Rate	11.1%	12.1%	12.8%

This rate is a ratio of the count of school-age students with disabilities (ages 4-21) to the total enrollment of all school-age students in the school district, including students who are parentally placed in nonpublic schools located in the school district. The numerator includes all school-age students for whom a district has Committee on Special Education (CSE) responsibility to ensure the provision of special education services. The denominator includes all school-age students who reside in the district. In the case of parentally placed students in nonpublic schools, it includes the number of students who attend the nonpublic schools located in the school district. Source data are drawn from the SIRS and from the Basic Education Data System (BEDS).

Similar District Group Description: Average Need/Resource Capacity

Similar District Groups are identified according to the Need-to-Resource-Capacity Index. More information about this categorization is on the Internet at: <http://www.p12.nysed.gov/irs/accountability/2011-12/NeedResourceCapacityIndex.pdf>

BAINBRIDGE-GUILFORD CENTRAL SCHOOL DISTRICT
2013-14 3-PART BUDGET

<u>BUDGET CODE</u>	<u>DESCRIPTION</u>	<u>ADMIN</u>	<u>PROGRAM</u>	<u>CAPITAL</u>	<u>TOTAL</u>
<u>General Support</u>					
A 1010 400 05 01	Board of Education - Contractual	7,975			7,975
A 1040 160 05 49	District Clerk - Salary	3,130			3,130
A 1060 400 05 03	District Meeting - Contractual	1,840			1,840
A 1240 150 05 49	Superintendent - Salary	129,920			129,920
A 1240 150 05 49	Superintendent - Salary used vacation	5,413			5,413
A 1240 160 05 49	Superintendent Secretary - Salary	34,749			34,749
A 1240 160 05 49 03	Superintendent Secretary - Bonus	665			665
A 1240 160 05 49 33	Attendance Incentive	0			0
A 1240 200 05 04	Superintendent-Equipment	0			0
A 1240 400 05 04	Superintendent - Contractual	2,975			2,975
A 1240 450 05 04	Superintendent - Supplies	1,440			1,440
A 1310 160 05 49	Asst. Supt - Salary	118,942			118,942
A 1310 160 05 49 01	Accounts Payable Clerk - Salary	29,480			29,480
A 1310 160 05 49 02	Payroll Clerk - Salary	41,872			41,872
A 1310 160 05 49 03	Accts Payable & Payroll Clerk - Bonus	910			910
A 1310 160 05 49 04	Treasurer - Salary	5,700			5,700
A 1310 160 05 49 33	Treasurer - Salary attendance incentive	0			0
A 1310 200 05 05 00	Equipment - Business Office	0			0
A 1310 400 05 05	Business Administration - Contractual	17,750			17,750
A 1310 450 05 05	Business Administration - Supplies	2,500			2,500
A 1310 490 05 05	Business Administration - BOCES	44,425			44,425
A 1320 400 05 05	Auditing - Contractual	15,000			15,000
A 1325 450 05 05	Treasurer - Supplies	0			0
A 1330 400 05 05	Tax Collection - Contractual	7,075			7,075
A 1345 490 05 43	Purchasing - BOCES	5,500			5,500
A 1380 400 05 10	Fiscal Agent Fees	0			0
A 1420 400 05 10	Legal - Contractual	10,250	10,250		20,500
A 1430 400 05 10	Personnel - Contractual	4,000			4,000
A 1430 490 05 43	Personnel - BOCES	16,500			16,500
A 1460 160 05 49	Records Management - Salary	1,500			1,500
A 1460 490 05 43	Records Mgmt - BOCES	5,645			5,645
A 1480 160 05 49	Public Information - Census Salary	1,199			1,199

A 1480 400 05 12	Public Information - Contractual	1,250		1,250
A 1480 400 05 12	Public Information - Contractual	2,000		2,000
A 1480 490 05 43	Public Information - BOCES	20,600		20,600
A 1620 160 01 49	Operations of Plant - Custodial - H S - Salary		157,680	157,680
A 1620 160 02 49	Operations of Plant - Custodial - Grnlwn Salary		53,912	53,912
A 1620 160 03 49	Operations of Plant - Custodial - Gldf - Salary		41,702	41,702
A 1620 160 05 49 01	Operations of Plant - Supt. Salary	59,473		59,473
A 1620 160 05 49 03	Operations of Plant - Longevity Bonus		7,650	7,650
A 1620 160 05 49 04	Operations of Plant - Custodial Overtime Pay		20,850	20,850
A 1620 160 05 49 05	Operations of Plant - Sub Pay		18,750	18,750
A 1620 160 05 49 06	Operations of Plant - Summer Help		14,700	14,700
A 1620 160 05 49 33	Operations of Plant - Attendance Incentives		1,000	1,000
A 1620 161 05 49	Operations of Plant - Maintenance Salaries		72,964	72,964
A 1620 161 05 49 04	Operations of Plant - Maintenance Overtime		6,000	6,000
A 1620 200 05 06	Operations of Plant - Equipment		2,450	2,450
A 1620 201 05 06	Operations of Plant - Uniforms		2,405	2,405
A 1620 400 05 06 07	Operations of Plant - Asbestos Compliance		172,657	172,657
A 1620 400 05 06 08	Operations of Plant - Contractual - Grounds		0	0
A 1620 400 05 06 09	Operations of Plant - Contractual - Buildings		0	0
A 1620 400 05 06 10	Operations of Plant - Contractual - Heating		0	0
A 1620 400 05 06 11	Operations of Plant - Contractual - Plumbing		0	0
A 1620 400 05 06 12	Operations of Plant - Contractual - Electric		0	0
A 1620 400 05 06 13	Operations of Plant - Contractual -		0	0
A 1620 400 05 06 14	Operations of Plant - Contracts & Services		0	0
A 1620 400 05 06 15	Operations of Plant - Sub Cleaners		0	0
A 1620 401 05 06 15	Operations of Plant - Utilities - Telephone		441,800	441,800
A 1620 401 05 06 16	Operations of Plant - Utilities - Electricity		0	0
A 1620 401 05 06 17	Operations of Plant - Utilities - Water Rent		0	0
A 1620 401 05 06 18	Operations of Plant - Utilities - Sewer		0	0
A 1620 401 05 06 19	Operations of Plant - Utilities - Refuse		0	0
A 1620 401 05 06 20	Operations of Plant - Utilities - LP Gas		0	0
A 1620 401 05 06 21	Operations of Plant - Utilities - Fuel Oil		0	0
A 1620 450 05 06	Operations of Plant - Supplies		51,040	51,040
A 1670 400 05 07	Central Printing and Mailing - Contractual	750		750
A 1670 400 05 07 42	Central Printing and Mailing - Contractual	20,250		20,250
A 1670 450 05 07	Central Printing and Mailing - Supplies	10,100		10,100
A 1670 490 05 43	Central Printing and Mailing - BOCES	34,500		34,500
A 1680 200 05 14	Central Data Processing - Equipment	0		0
A 1680 400 05 14	Central Data Processing - Contractual	0		0
A 1680 450 05 14	Central Data Processing - Supplies	500		500

A 1680 460 05 14	Central Data Processing - Software	2,500	2,500
A 1680 490 05 43	Central Data Processing - BOCES	471,250	471,250
A 1910 400 05 15	Insurance - Contractual	89,000	89,000
A 1920 400 05 15	School Board Assn. Dues - Contractual	6,595	6,595
A 1964 400 05 15	Property Tax Refunds	1,500	1,500
A 1981 490 05 43	Administrative Charges - BOCES	0	120,750
A 1983 490 05 43	Capital Expenses-BOCES	0	272,577
			272,577

Instruction

A 2010 150 05 16	Curriculum Develop & Supervision - Salaries	2,500	2,500
A 2010 160 05 16	Summer Salaries	0	0
A 2010 400 05 16	Curriculum Development	0	0
A 2010 450 05 16	Curriculum Develop & Supervision - Supplies	0	0
A 2020 150 01 49	Supervision Regular Day - H S Administrator	91,607	91,607
A 2020 150 01 49 01	Supervision Regular Day - Dean of Students	0	0
A 2020 150 01 49 02	Supervision Regular Day - M S Administrator	0	0
A 2020 150 01 49 03	New HS Principal	0	0
A 2020 150 01 49 04	New MS/ Dean	0	0
A 2020 150 02 49	Supervision Regular Day - Greenlawn Admin.	96,109	96,109
A 2020 150 03 49	Supervision Regular Day - Guilford Admin.	61,199	61,199
A 2020 160 01 49	Supervision Regular Day - H S Secretary	30,547	30,547
A 2020 160 01 49 04	Supervision Regular Day - H S Secretary - Bonus	1,700	1,700
A 2020 160 01 49 01	Supervision Regular Day - Dean Secretary	28,439	28,439
A 2020 160 02 49	Supervision Regular Day - Greenlawn Secretary	24,393	24,393
A 2020 160 02 49 04	Supervision Regular Day - Greenlawn Secretary - Bonus	900	900
A 2020 160 03 49	Supervision Regular Day - Guilford Secretary	25,912	25,912
A 2020 160 03 49 04	Supervision Regular Day - Guilford Secretary	200	200
A 2020 160 05 49 03	Supervision Regular Day - Secretary Bonus'	1,150	1,150
A 2020 160 05 49 33	Supervision Regular Day - Attendance inc.	200	200
A 2020 200 01 38	Supervision Regular Day - Equipment HS	0	0
A 2020 200 02 34	Supervision Regular Day - Equipment Greenlawn	0	0
A 2020 200 03 35	Supervision Regular Day - Equipment Guilford	0	0
A 2020 400 01 09	Supervision Regular Day - Contractual MS	0	0
A 2020 400 01 38	Supervision Regular Day - Contractual HS	1,850	1,850
A 2020 400 02 34	Supervision Regular Day - Contractual Gmlwn	3,900	3,900
A 2020 400 03 35	Supervision Regular Day - Contractual Glf	0	0
A 2020 400 05 50	Supervision Regular Day - Contractual District	2,000	2,000
A 2020 450 01 09 00	Supervision Regular Day - Supplies Mid. Sch	0	0
A 2020 450 01 38	Supervision Regular Day - Supplies HS	2,999	2,999

A 2020 450 02 34	Supervision Regular Day - Supplies Grnlwn	1,400	1,400	
A 2020 450 03 35	Supervision Regular Day - Supplies Gifd	1,884	1,884	
A 2020 460 03 35	Supervision Regular Day - Software Gifd	0	0	
A 2020 490 05 43	Supervision Regular Day - BOCES	50,400	50,400	
A 2060 150 05 49	Research Planning Evaluation - Dept. Head Salary	5,500	5,500	
A 2060 400 05 16	Research Planning Evaluation - Contractual	0	0	
A 2060 450 05 16	Research Planning Evaluation - Supplies	0	0	
A 2070 150 05 16 00	Inservice Training - Salary		5,000	
A 2070 400 05 16	Inservice Training - Contractual		25,000	
A 2070 400 05 16 01	Inservice Training - Conferences - HS		0	
A 2070 400 05 16 02	Inservice Training - Conferences - Greenlawn		0	
A 2070 400 05 16 03	Inservice Training - Conferences - Guilford		0	
A 2070 450 05 16	Inservice Training - Supplies		0	
A 2110 120 02 49	Teaching Regular School - Salaries Greenlawn		1,063,325	
A 2110 120 02 49 05	Teaching Regular School - Salaries Greenlawn		0	
A 2110 120 02 49 33	Teaching Regular School - attendance inc.		1,000	
A 2110 120 03 49	Teaching Regular School - Salaries Guilford		427,177	
A 2110 120 03 49 33	Teaching Regular School - Gifd. Attendance inc.		500	
A 2110 130 01 49	Teaching Regular School - Salaries HS		1,504,866	
A 2110 130 01 49 04	Teaching Regular School - Salaries HS overtime		0	
A 2110 130 01 49 33	Teaching Regular School - Salaries HS Attend.		2,500	
A 2110 140 05 49	Teaching Regular School - Salaries Teach subs		140,500	
A 2110 155 01 49	Teaching Regular School - PSEN MS/HS		0	
A 2110 155 02 49	Teaching Regular School - PSEN Greenlawn		0	
A 2110 155 03 49	Teaching Regular School - PSEN Guilford		0	
A 2110 160 01 49	Teaching Regular School - Aides HS		51,600	
A 2110 160 01 49 03	Teaching Regular School - Aides HS Bonus		520	
A 2110 160 01 49 04	Teaching Regular School - Aides HS Overtime		1,250	
A 2110 160 02 49	Teaching Regular School - Aides Greenlawn		47,100	
A 2110 160 02 49 03	Teaching Regular School - Aides Grnlwn Bonus		618	
A 2110 160 02 49 04	Teaching Regular School - Aides Grnlwn Overtime		600	
A 2110 160 03 49	Teaching Regular School - Aides Guilford		48,675	
A 2110 160 03 49 03	Teaching Regular School - Aides Gifd Bonus		900	
A 2110 160 03 49 04	Teaching Regular School - Aides Gifd Overtime		1,050	
A 2110 160 05 49	Teaching Regular School - Sub Aides		23,750	
A 2110 160 05 49 33	Attendance Incentive - Inst. Support		500	
A 2110 165 01 49	Teaching Regular School - Aides PSEN HS		0	
A 2110 165 02 49	Teaching Regular School - Aides PSEN Grnlwn		0	
A 2110 165 02 49 03	Teaching Regular School - PSEN Grnlwn bonus		0	
A 2110 200 01 09 19	Teaching Regular School - Equip. MS Math		3,917	
				3,917

A 2110 200 01 09 29	Teaching Regular School - Equip. MS Home Ec	0	0
A 2110 200 01 25 00	Teaching Regular School - Equip. Music	0	0
A 2110 200 01 38 00	Teaching Regular School - Equip. High School	0	0
A 2110 200 01 38 18	Teaching Regular School - Equip. HS Foreign Lang.	0	0
A 2110 200 01 38 19	Teaching Regular School - Equip. HS Math	0	0
A 2110 200 01 38 20	Teaching Regular School - Equip. HS Science	0	0
A 2110 200 01 38 21	Teaching Regular School - Equip. HS Soc St.	0	0
A 2110 200 01 38 22	Teaching Regular School - Equip. HS Art	0	0
A 2110 200 01 38 28	Teaching Regular School - Equip. HS Bus. Ed.	0	0
A 2110 200 01 38 29	Teaching Regular School - Equip. HS Home Ec	0	0
A 2110 200 01 38 30	Teaching Regular School - Equip. HS Technology	0	0
A 2110 200 02 23 00	Teaching Regular School - Equip. Grnlwn Art	0	0
A 2110 200 02 24 00	Teaching Regular School - Equip. Phys. Ed.	0	0
A 2110 200 02 34 00	Teaching Regular School - Equip. Greenlawn	0	0
A 2110 200 03 35 00	Teaching Regular School - Equip. Guilford	0	0
A 2110 400 01 09 19	Teaching Regular School - Contract - MS Math	7,160	7,160
A 2110 400 01 09 20	Teaching Regular School - Contract - MS Science	0	0
A 2110 400 01 09 29	Teaching Regular School - Contract - MS Home E	0	0
A 2110 400 01 25 00	Teaching Regular School - Contract - Music	0	0
A 2110 400 01 38 13	Teaching Regular School - Contract -HS Health	0	0
A 2110 400 01 38 20	Teaching Regular School - Contract HS Science	0	0
A 2110 400 01 38 21	Teaching Regular School - Contract -HS Soc St.	0	0
A 2110 400 02 34 00	Teaching Regular School - Contract - Greenlawn	0	0
A 2110 400 03 35 00	Teaching Regular School - Contract - Guilford	0	0
A 2110 400 05 27 00	Teaching Regular School - Contract - Gifted & Tal.	0	0
A 2110 450 01 09 17	Teaching Regular School - Supplies - MS Eng.	54,745	54,745
A 2110 450 01 09 18	Teaching Regular School - Supplies - MS lang.	0	0
A 2110 450 01 09 19	Teaching Regular School - Supplies MS Math	0	0
A 2110 450 01 09 20	Teaching Regular School - Supplies MS Science	0	0
A 2110 450 01 09 21	Teaching Regular School - Supplies MS Soc St.	0	0
A 2110 450 01 09 22	Teaching Regular School - Supplies MS Art	0	0
A 2110 450 01 09 29	Teaching Regular School - Supplies MS Home Ec	0	0
A 2110 450 01 09 30	Teaching Regular School - Supplies MS Techn.	0	0
A 2110 450 01 25 00	Teaching Regular School - Supplies Music	0	0
A 2110 450 01 38 00	Teaching Regular School - Supplies High School	0	0
A 2110 450 01 38 17	Teaching Regular School - Supplies HS English	0	0
A 2110 450 01 38 18	Teaching Regular School - Supplies HS F. Lang.	0	0
A 2110 450 01 38 19	Teaching Regular School - Supplies HS Math	0	0
A 2110 450 01 38 20	Teaching Regular School - Supplies HS Science	0	0
A 2110 450 01 38 21	Teaching Regular School - Supplies HS Soc St.	0	0

A 2250 160 01 49 04	HDCP - Aides Overtime HS / MS	600	600	
A 2250 160 02 49	HDCP - Aides Salary Greenlawn	84,850	84,850	
A 2250 160 02 49 03	HDCP - Aides Bonus Greenlawn	1,550	1,550	
A 2250 160 02 49 04	HDCP - Aides Overtime Greenlawn	1,350	1,350	
A 2250 160 03 49	HDCP - Aides Salary Guilford	27,100	27,100	
A 2250 160 03 49 03	HDCP - Aides Salary Guilford Bonus	400	400	
A 2250 160 03 49 04	HDCP - Aides Salary Guilford Overtime	425	425	
A 2250 160 05 49	HDCP - Salary Secretary to Administrator	26,977	26,977	
A 2250 160 05 49 03	HDCP - Secretary bonus	200	200	
A 2250 160 05 49 04	HDCP - Secretary Overtime	400	400	
A 2250 160 05 49 06	HDCP - Summer Aid Salary	0	0	
A 2250 200 05 37	HDCP - Equipment	0	0	
A 2250 400 05 37	HDCP - Contractual	6,650	6,650	
A 2250 450 05 37	HDCP - Supplies	5,218	5,218	
A 2250 460 05 37	HDCP - Software	0	0	
A 2250 470 05 37	HDCP - Tuition	521,500	521,500	
A 2250 480 05 37	HDCP - Textbooks	136	136	
A 2250 490 05 37	HDCP - BOCES	1,126,385	1,126,385	
A 2280 490 05 43	Occupational Education - BOCES	597,699	597,699	
A 2330 150 05 49	Teaching Sp. Schools - Salary Summer Sch.	5,500	5,500	
A 2330 450 05 39	Teaching Sp. Schools - Supplies	0	0	
A 2330 490 05 43	Teaching Sp. Schools - BOCES	2,500	2,500	
A 2610 150 01 49	Library/Audiovisual - Salary HS Librarian	54,813	54,813	
A 2610 150 02 49	Library/Audiovisual - Salary Elem. Librarian	23,977	23,977	
A 2610 150 05 49 05	Library/Audiovisual - Librarian - summer	0	0	
A 2610 160 01 49	Library/Audiovisual - Salary Library aide HS	0	0	
A 2610 160 01 49 03	Library/Audiovisual - Library Aide Bonus	0	0	
A 2610 160 01 49 04	Library/Audiovisual - Library Adie Overtime	0	0	
A 2610 160 02 49	Library/Audiovisual - Salary Library Aide Gmlwn	0	0	
A 2610 160 02 49 03	Library/Audiovisual- Library Aide Bonus	0	0	
A 2610 160 02 49 04	Library/Audiovisual- Library Aide Overtime	0	0	
A 2610 160 05 49 05	Library/Audiovisual - Library Aide - Summer	0	0	
A 2610 200 03 33	Library/Audiovisual - Equipment- Guilford	0	0	
A 2610 400 03 33	Library/Audiovisual - Contractual	0	0	
A 2610 450 01 31	Library/Audiovisual - Supplies HS Library	11,489	11,489	
A 2610 450 02 32	Library/Audiovisual - Supplies Gmlwn Library	0	0	
A 2610 450 03 33	Library/Audiovisual - Supplies Glfd Library	0	0	
A 2610 460 01 31	Library/Audiovisual - Software HS Library	0	0	
A 2610 490 05 43	Library/Audiovisual - BOCES	56,750	56,750	
A 2620 200 05 16	Educational Television - Equipment	0	0	

A 2620 400 05 16	Educational Television - Contractual	0	0
A 2620 450 05 16	Educational Television - Supplies	0	0
A 2630 150 05 49	Computer Assisted Instr. - Salary	0	0
A 2630 150 05 49 06	Computer Assisted Instr. - Salary Summer Stip.	0	0
A 2630 200 05 26	Computer Assisted Instr. - Equipment	15,000	15,000
A 2630 400 05 26	Computer Assisted Instr. - Contractual	1,000	1,000
A 2630 450 05 26	Computer Assisted Instr. - Supplies	22,000	22,000
A 2630 460 05 26	Computer Assisted Instr. - Software	13,000	13,000
A 2630 490 05 43	Computer Assisted Instr. - BOCES	192,191	192,191
A 2810 150 01 49	Guidance Regular Day - HS Guidance Counselors	36,208	36,208
A 2810 150 02 49	Guidance Regular Day - Gmlwn Guid. Counselors	54,692	54,692
A 2810 150 05 49	Guidance Regular Day - Summer Stipends	11,300	11,300
A 2810 160 05 49	Guidance Regular Day - Aides/Secretaries	42,933	42,933
A 2810 160 05 49 03	Guidance Regular Day - Bonus'	200	200
A 2810 160 05 49 04	Guidance Regular Day - Overtime	400	400
A 2810 200 01 11	Guidance Regular Day-Equipment	0	0
A 2810 400 01 11	Guidance Regular Day - MS Contractual	1,889	1,889
A 2810 400 01 41	Guidance Regular Day - HS Contractual	3,000	3,000
A 2810 450 01 11	Guidance Regular Day - Supplies Middle School	0	0
A 2810 450 01 41	Guidance Regular Day - Supplies HS	264	264
A 2810 450 02 40	Guidance Regular Day - Supplies Elem.	511	511
A 2810 480 01 11	Guidance Regular Day-Textbooks	0	0
A 2810 490 03 43	Guidance Regular Day - BOCES	3,375	3,375
A 2815 150 05 49	Health Services - Nurses Salary	0	0
A 2815 150 05 49 05	Health Services - Nurses Salary summer	0	0
A 2815 160 01 49	Health Services - Health Aide HS/MS	35,000	35,000
A 2815 160 01 49 03	Health Services - Bonus	0	0
A 2815 160 02 49	Health Services - Health Aide Greenlawn	39,044	39,044
A 2815 160 02 49 03	Health Services - Bonus	800	800
A 2815 160 02 49 04	Health Services - Overtime	360	360
A 2815 160 03 49	Health Services - Health Aide Guilford	35,000	35,000
A 2815 160 03 49 03	Health Services - Bonus	0	0
A 2815 160 03 49 04	Health Services - Overtime	0	0
A 2815 160 05 49 00	Health Services - District	0	0
A 2815 200 05 42	Health Services - Equipment	0	0
A 2815 400 05 42	Health Services - Contractual	17,850	17,850
A 2815 450 01 42	Health Services - Supplies HS/MS	2,994	2,994
A 2815 450 02 42	Health Services - Supplies Greenlawn	0	0
A 2815 450 03 42	Health Services - Supplies Guilford	0	0
A 2815 490 03 42	Health Services - BOCES	2,500	2,500

A 5510 160 04 49 09	Dist. Trans. Serv. - Salary Bus Aides	0	0	0
A 5510 160 04 49 10	Dist. Trans. Serv. - Field Trips - HS	0	0	0
A 5510 160 04 49 11	Dist. Trans. Serv. - Summer Sp. Education	0	0	0
A 5510 160 04 49 12	Dist. Trans. Serv. - Summer Reading Prog	0	0	0
A 5510 160 04 49 13	Dist. Trans. Serv. - Summer 3-D Program	0	0	0
A 5510 160 04 49 14	Dist. Trans. Serv. - Bus Aides - Summer Sp. Ed.	0	0	0
A 5510 160 04 49 15	Dist. Trans. Serv. - Bus Aides - Summer	0	0	0
A 5510 160 04 49 20	Dist. Trans. Serv. - Field Trips - Greenlawn	0	0	0
A 5510 160 04 49 30	Dist. Trans. Serv. - Field Trips - Glfd	0	0	0
A 5510 160 04 49 33	Inst. Support - Attendance Incentive	0	0	0
A 5510 160 04 49 40	Dist. Trans. Serv. - Band Trips	0	0	0
A 5510 160 05 49	Dist. Trans. Salary Increment Adjustment	0	0	0
A 5510 200 04 46	Dist. Trans. Serv. - Equipment	0	0	0
A 5510 201 04 46 00	Uniforms	0	0	0
A 5510 210 04 46 00	Buses	0	0	0
A 5510 400 04 46	Dist. Trans. Serv. - Contractual	37,900	37,900	37,900
A 5510 400 04 46 02	Dist. Trans. Serv. - Insurances Fleet	0	0	0
A 5510 400 04 46 03	Dist. Trans. Serv. - Worker's Comp.	0	0	0
A 5510 400 04 46 04	Dist. Trans. Serv. - Bus Driver Physicals	0	0	0
A 5510 450 04 46	Dist. Trans. Serv. - Supplies Buses	157,000	157,000	157,000
A 5510 450 04 46 01	Dist. Trans. Serv. - Supplies Cars & Trucks	0	0	0
A 5510 450 04 46 02	Dist. Trans. Serv. - Supplies Gasoline	0	0	0
A 5510 450 04 46 03	Dist. Trans. Serv. - Supplies - Oil Antifreeze	0	0	0
A 5510 450 04 46 04	Dist. Trans. Serv. - Supplies Tires	0	0	0
A 5510 490 05 43	Dist. Trans. Serv. - BOCES	3,100	3,100	3,100
A 5530 200 04 46	Garage Building - Equipment	0	0	0
A 5530 201 04 46	Garage Building - Uniforms	600	600	600
A 5530 401 04 46	Garage Building - Utilities - Telephone	17,950	17,950	17,950
A 5530 401 04 46 01	Garage Building - Utilities - Electricity	0	0	0
A 5530 401 04 46 02	Garage Building - Utilities - Propane Heat	0	0	0
A 5530 401 04 46 03	Garage Building - Utilities - Water Rent	0	0	0
Undistributed				
A 9010 800 05 47	Benefits - Employee's Retirement	0	24,624	330,584
A 9020 800 05 47	Benefits - Teacher's Retirement	128,736	0	809,735
A 9020 800 05 47	Benefits - Employer 403b	6,000	0	6,000
A 9030 800 05 47	Benefits - Social Security	71,575	30,472	480,671
A 9040 800 05 47	Benefits - Worker's Comp.	12,024	5,119	80,750

A 9050 800 05 47	0	0	0	0	0
A 9060 800 05 47	289,606	1,531,990	123,298	1,944,894	0
A 9061 800 05 47	0	0	0	0	0
A 9065 800 05 47	11,039	58,396	4,700	74,135	0
A 9711 600 05 48			1,095,000	1,095,000	0
A 9711 700 05 48			148,970	148,970	0
A 9732 600 05 48			38,445	38,445	0
A 9732 600 05 48			0	0	0
A 9732 700 05 48			2,885	2,885	0
A 9770 700 05 48 00			0	0	0
A 9770 900 05 50 00			0	0	0
A 9950 900 05 50 00		0	0	0	0
<i>rounding adjustment</i>		1	1	1	1
TOTALS	2,437,710	11,399,665	2,831,701	16,669,076	

Summary of Three-Part Components & Administrative Percentage

Component Percent of Total:	14.6%	68.4%	17.0%	100%
Administrative Percentage (Based on Admin & Program Components only):	17.6%			
Reconciliation:			Verification:	16,669,076
			Variance:	-

Summary of Contingency 3-Part Calculations:

Part	\$	%
Admin	2,437,710	14.6%
Program	11,399,665	68.4%
Capital	2,831,701	17.0%
Total	16,669,076	100.0%

Salary: Administrative Compensation Information
080201 - BAINBRIDGE-GUILFORD

2012-2013 - Page 1
Official - as of 04/26/2013 03:22 PM

Submittal Form for Estimated Salaries in the Budget for the 2013-2014 School Year
(Form Due - May 13, 2013)

Sections 1608 and 1716 of the Education Law
(Please read the instructions and definitions before completing this form.)

Title	Salary	Employee Benefits	Other Remuneration
1. Superintendent of Schools	129,120	47,466	2,690
Associate, Assistant and Deputy Superintendents (Example Titles: Associate Superintendent for Instruction, Deputy Superintendent, Assistant Superintendent for Business, etc.)			
2.			
3.			
4.			
5.			
6.			
7.			
8.			
9.			
10.			
11.			
12.			
13.			
14.			
15.			
16.			
17.			
18.			
19.			
20.			
21.			
22.			
23.			
24.			
25.			
26.			
27.			
28.			
29.			
30.			
31.			
32.			
33.			
34.			
35.			
36.			

Salary: Administrative Compensation Information
080201 - BAINBRIDGE-GUILFORD

2012-2013 - Page 2
Official - as of 04/26/2013 03:22 PM

Title	Salary	Employee Benefits	Other Remuneration
37.			
38.			
39.			
40.			
41.			
42.			
43.			
44.			
45.			
46.			
47.			
48.			
49.			
50.			
51.			
52.			
53.			
54.			
55.			
56.			
57.			
58.			
59.			
60.			
61.			
62.			
63.			
64.			
65.			
66.			
67.			
68.			
69.			
70.			

Salary: Administrative Compensation Information
080201 - BAINBRIDGE-GUILFORD

2012-2013 - Page 3
Official - as of 04/26/2013 03:22 PM

Other Supervisory and Administrative Employees Scheduled to Receive \$126,000 or More in Salary

71.		
72.		
73.		
74.		
75.		
76.		
77.		
78.		
79.		
80.		
81.		
82.		
83.		
84.		
85.		
86.		
87.		
88.		
89.		
90.		
91.		
92.		
93.		
94.		
95.		
96.		
97.		
98.		
99.		
100.		
101.		
102.		
103.		
104.		
105.		
106.		
107.		
108.		
109.		
110.		
111.		
112.		

Salary: Administrative Compensation Information
080201 - BAINBRIDGE-GUILFORD

2012-2013 - Page 4
Official - as of 04/26/2013 03:22 PM

113.		
114.		
115.		
116.		
117.		
118.		
119.		
120.		
121.		
122.		
123.		
124.		
125.		
126.		
127.		
128.		
129.		
130.		
131.		
132.		
133.		
134.		
135.		
136.		
137.		
138.		
139.		
140.		
141.		
142.		
143.		
144.		
145.		
146.		
147.		
148.		
149.		
150.		
151.		
152.		
153.		
154.		
155.		
156.		
157.		

Salary: Administrative Compensation Information
080201 - BAINBRIDGE-GUILFORD

2012-2013 - Page 5
Official - as of 04/26/2013 03:22 PM

158.		
159.		
160.		
161.		
162.		
163.		
164.		
165.		
166.		
167.		
168.		
169.		
170.		
171.		
172.		
173.		
174.		
175.		
176.		
177.		
178.		
179.		
180.		
181.		
182.		
183.		
184.		
185.		
186.		
187.		
188.		
189.		
190.		



CHENANGO COUNTY
REAL PROPERTY TAX SERVICES
COUNTY OFFICE BUILDING
5 Court Street, Norwich, N.Y. 13815
www.co.chenango.ny.us



STEPHEN R. HARRIS
DIRECTOR RPTS

TAX MAPPING
(607) 337-1494

REAL PROPERTY INFORMATION

(607) 337-1490

FAX:
(607) 337-1496

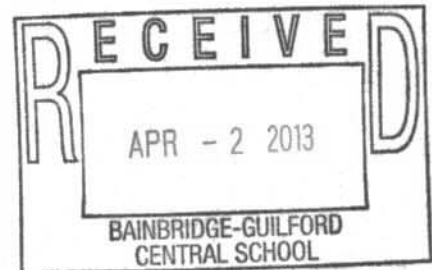
Memorandum

To: School Business Managers

From: Kathy Brown
RPTS Information Aide

Date: April 1, 2013

Re: S495 Exemption Impact Report



Enclosed is the exemption impact report for your school district. If you should have any questions feel free to contact our office.

School District - 082201 Bain-Gulf Cen Sch

Equalized Total Assessed Value 325,796,613

Exemption Code	Exemption Name	Statutory Authority	Number of Exemptions	Total Equalized Value of Exemptions	Percent of Value Exempted
13500	TOWN - GENERALLY	RPTL 406(1)	22	2,265,200	0.70
13650	VG - GENERALLY	RPTL 406(1)	34	2,487,300	0.76
13800	SCHOOL DISTRICT	RPTL 408	7	10,059,100	3.09
13870	SPEC DIST USED FOR PURPOSE EST	RPTL 410	3	82,300	0.03
21600	RES OF CLERGY - RELIG CORP OWN	RPTL 462	2	254,300	0.08
25110	NONPROF CORP - RELIG/CONST PRO	RPTL 420-a	14	2,772,800	0.85
25230	NONPROF CORP - MORAL/MENTAL IM	RPTL 420-a	1	1,016,700	0.31
25300	NONPROF CORP - SPECIFIED USES	RPTL 420-b	5	100,100	0.03
26250	HISTORICAL SOCIETY	RPTL 444	2	69,100	0.02
26400	INC VOLUNTEER FIRE CO OR DEPT	RPTL 464(2)	1	56,817	0.02
27350	PRIVATELY OWNED CEMETERY LAND	RPTL 446	20	384,207	0.12
41400	CLERGY	RPTL 460	2	3,739	0.00
41700	AGRICULTURAL BUILDING	RPTL 483	3	143,800	0.04
41720	AGRICULTURAL DISTRICT	AG-MKTS L 305	160	6,275,867	1.93
41800	PERSONS AGE 65 OR OVER	RPTL 467	14	465,276	0.14
41805	PERSONS AGE 65 OR OVER	RPTL 467	30	681,575	0.21
41834	ENHANCED STAR	RPTL 425	457	26,967,961	8.28
41844	ENHANCED STAR, RENTED MOBILE H	RPTL 425	4	86,193	0.03
41854	BASIC STAR 1999-2000	RPTL 425	1,118	33,750,452	10.36
41864	BASIC STAR, RENTED MOBILE HOME	RPTL 425	13	165,550	0.05
42100	SILOS, MANURE STORAGE TANKS,	RPTL 483-a	3	27,762	0.01
47450	FOREST/REF LAND - FISHER ACT	RPTL 480	4	220,694	0.07
47460	FOREST LAND CERTD AFTER 8/74	RPTL 480-a	40	1,918,111	0.59
47610	BUSINESS INVESTMENT PROPERTY F	RPTL 485-b	3	174,191	0.05
47900	FAIR POLLUTION CONTROL FACILIT	RPTL 477-a	1	467,283	0.14
49500	SOLAR OR WIND ENERGY SYSTEM	RPTL 487	1	20,900	0.01
50000	SYSTEM CODE	STATUTORY AUTH NOT DEFINED	2	87,700	0.03
50005	SYSTEM CODE	STATUTORY AUTH NOT DEFINED	1	0	0.00

Equalized Total Assessed Value 325,786,613

School District - 082201 Bain-Gulf Cen Sch

Exemption Code	Exemption Name	Statutory Authority	Number of Exemptions	Total Equalized Value of Exemptions	Percent of Value Exempted
50006	SYSTEM CODE	STATUTORY AUTH NOT DEFINED	1	0	0.00
Total Exemptions Exclusive of System Exemptions:			1,964	90,917,278	27.91
Total System Exemptions:			4	87,700	0.03
Totals:			1,968	91,004,978	27.93

Values have been equalized using the Uniform Percentage of Value. The Exempt amounts do not take into consideration, payments in lieu of taxes or other payments for municipal services.

Amount, if any, attributable to payments in lieu of taxes: _____

Equalized Total Assessed Value 6,952,223

School District - 082201 Bainbrdg Gilfrd

Exemption Code	Exemption Name	Statutory Authority	Number of Exemptions	Total Equalized Value of Exemptions	Percent of Value Exempted
12100	NYS - GENERALLY	RPTL 404(1)	5	2,875,666	41.36
41720	AGRICULTURAL DISTRICT	AG-MKTS L 305	6	171,583	2.47
41834	ENHANCED STAR	RPTL 425	1	69,633	1.00
41854	BASIC STAR 1999-2000	RPTL 425	2	66,000	0.95
47460	FOREST LAND CERTD AFTER 8/74	RPTL 480-a	3	94,186	1.35
50000	SYSTEM CODE	STATUTORY AUTH NOT DEFINED	1	0	0.00
Total Exemptions Exclusive of System Exemptions:				3,277,068	47.14
Total System Exemptions:				0	0.00
Totals:				3,277,068	47.14

Values have been equalized using the Uniform Percentage of Value. The Exempt amounts do not take into consideration, payments in lieu of taxes or other payments for municipal services.

Amount, if any, attributable to payments in lieu of taxes:

S-495 Exemption Impact Report

Henry Schecher [schecherh@otsegocounty.com]

Sent: Friday, March 15, 2013 2:26 PM

To: Kenneth Wilcox

Cc: schecherh@otsegocounty.com

Attachments: Bainbridge_Guil_CWSS_2012.pdf (8 KB) ; Bainbridge_Guil_S495_2012.pdf (8 KB) ; Bainbridge_Guil_SDS_2012.pdf (8 KB)

Attached is the S-495 Exemption impact report, based on the 2012 Assessment roll.
Please call me at (607) 547-7537 if you need any further information.

Hank Schecher
Otsego County RPTS

Equalized Total Assessed Value 6,576,068

Exemption Code	Exemption Name	Statutory Authority	Number of Exemptions	Total Equalized Value of Exemptions	Percent of Value Exempted
13650	VG - GENERALLY	RPTL 406(1)	1	2,833	0.04
41834	ENHANCED STAR	RPTL 425	8	480,219	7.30
41854	BASIC STAR 1999-2000	RPTL 425	15	503,667	7.66
47610	BUSINESS INVESTMENT PROPERTY P	RPTL 485-b	2	322,811	4.91
Total Exemptions Exclusive of System Exemptions:				2,182,550	33.19
Total System Exemptions:				0	0.00
Totals:				2,182,550	33.19

Values have been equalized using the Uniform Percentage of Value. The Exempt amounts do not take into consideration, payments in lieu of taxes or other payments for municipal services.

Amount, if any, attributable to payments in lieu of taxes: _____

Equalized Total Assessed Value 6,576,068

School District - 082201 Bainbridge-Guilford

Exemption Code	Exemption Name	Statutory Authority	Number of Exemptions	Total Equalized Value of Exemptions	Percent of Value Exempted
13650	VG - GENERALLY	RPTL 406(1)	1	2,833	0.04
41834	ENHANCED STAR	RPTL 425	8	480,219	7.30
41854	BASIC STAR 1999-2000	RPTL 425	15	503,667	7.66
47610	BUSINESS INVESTMENT PROPERTY P	RPTL 485-b	2	322,811	4.91
Total Exemptions Exclusive of System Exemptions:				1,309,530	19.91
Total System Exemptions:				0	0.00
Totals:				1,309,530	19.91

Values have been equalized using the Uniform Percentage of Value. The Exempt amounts do not take into consideration, payments in lieu of taxes or other payments for municipal services.

Amount, if any, attributable to payments in lieu of taxes: _____

Equalized Total Assessed Value 6,576,068

School District - 082201 Bainbridge-Guilford

Exemption Code	Exemption Name	Statutory Authority	Number of Exemptions	Total Equalized Value of Exemptions	Percent of Value Exempted
13650	VG - GENERALLY	RPTL 406(1)	1	2,833	0.04
41834	ENHANCED STAR	RPTL 425	8	480,219	7.30
41854	BASIC STAR 1999-2000	RPTL 425	15	503,667	7.66
47610	BUSINESS INVESTMENT PROPERTY P	RPTL 485-b	2	322,811	4.91
Total Exemptions Exclusive of System Exemptions:				1,309,530	19.91
Total System Exemptions:				0	0.00
Totals:				1,309,530	19.91

Values have been equalized using the Uniform Percentage of Value. The Exempt amounts do not take into consideration, payments in lieu of taxes or other payments for municipal services.

Amount, if any, attributable to payments in lieu of taxes: _____

BAINBRIDGE-GUILFORD CSD
 Revenue Ledger Transactions
 General Fund

Date Range 07-01-2012 - 04-30-2013 Printed: 4/29/2013 9:28:41AM

Row	Date	Explanation	Reference	Estimated Revenue	Received Revenue	Unearned Revenue
A1081000		PAYMENT IN LIEU OF TAXES				
1	07/01/2012	Account Code Created	AC 1	8,000.00		8,000.00
2	08/21/2012	PILOT-CHIPS	CR 2	0.00	1,966.94	6,033.06
3	02/22/2013	MISCELLANEOUS: Stumpage Tax (Demerree)	CR 8	0.00	1,116.00	4,917.06
4	03/14/2013	PILOT-CHEN, DEL, OT	CR 9	0.00	2,033.90	2,883.16
			Total:	8,000.00	5,116.84	2,883.16
			Grand Total:	8,000.00	5,116.84	2,883.16